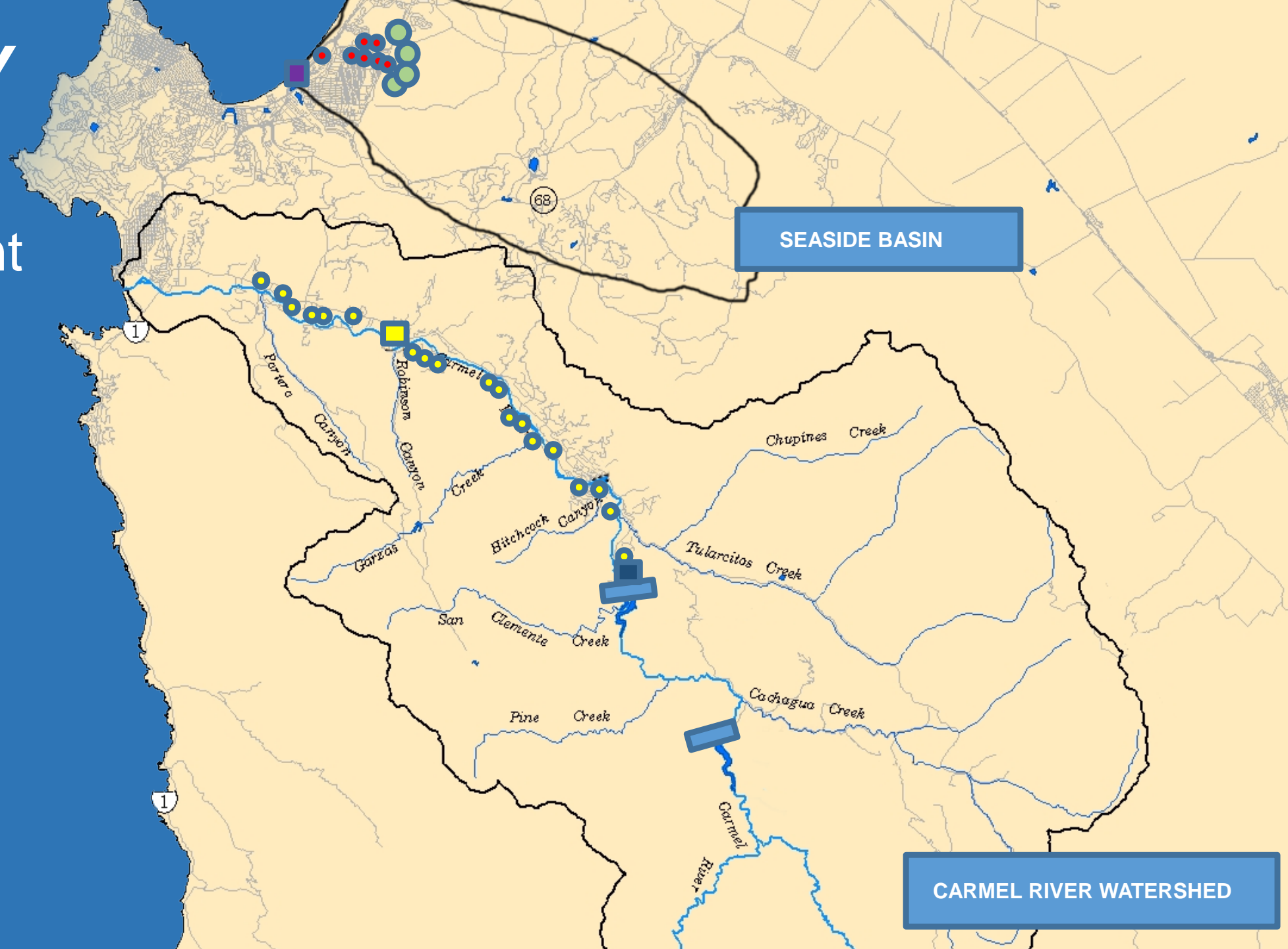


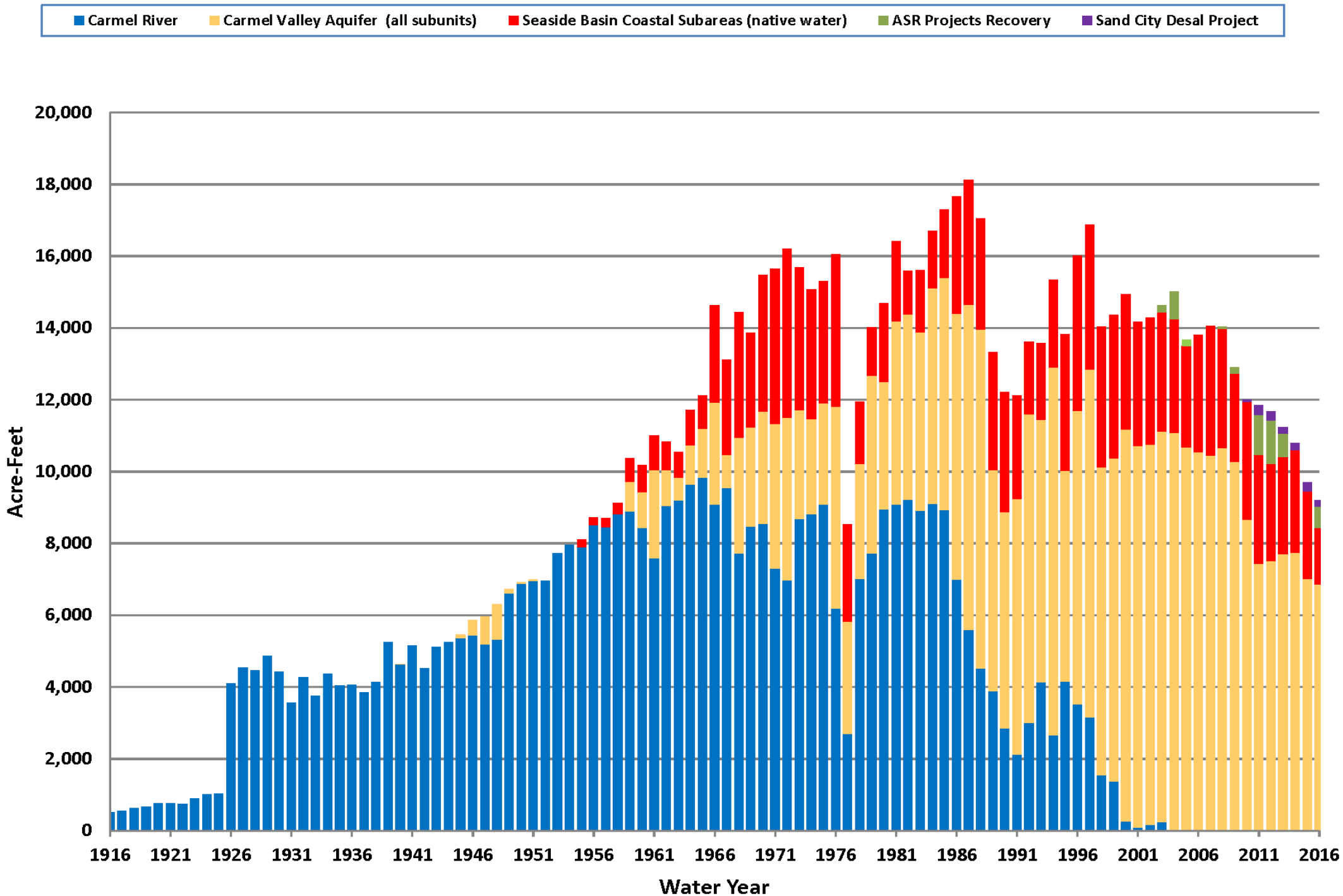
MONTEREY PENINSULA WATER SUPPLY PROJECT & HISTORICAL CONTEXT



CALIFORNIA
AMERICAN WATER

1880 – present





AUGUST

1977

Severe drought

- Inflow was approximately 4% of the long-term average

SEPTEMBER

1992

Drought

JUNE

1995

SWRCB issues
order 95-10

AUGUST

1997

Steelhead listed
as “threatened”

OCTOBER

2009

Cease and Desist
Order

DECEMBER

2010

CPUC approves
Regional Desal project

APRIL

2012

MPWSP application
filed with CPUC

Monterey Peninsula Water Supply Project (MPWSP)

DESALINATION

6,252 AF

GWR
ground water
replenishment

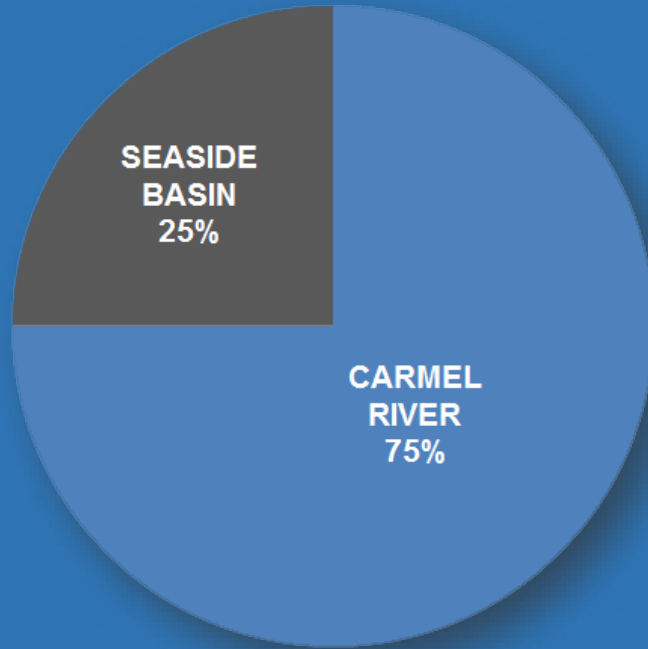
3,500 AF

1,300 AF

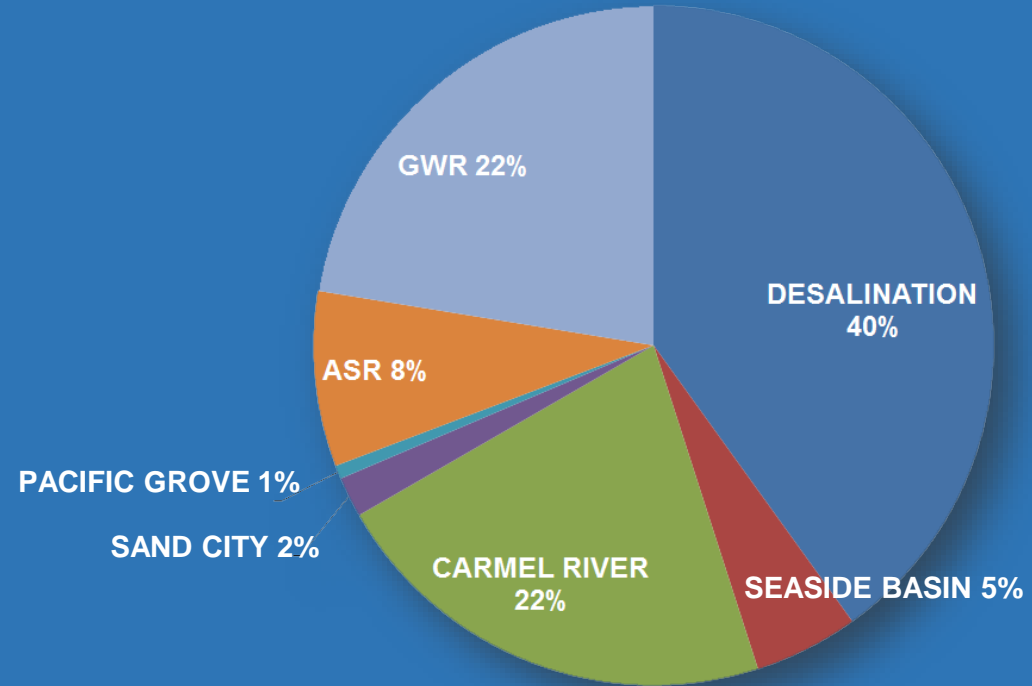
ASR
aquifer storage
and recovery

WATER SOURCES

TODAY/TOMORROW

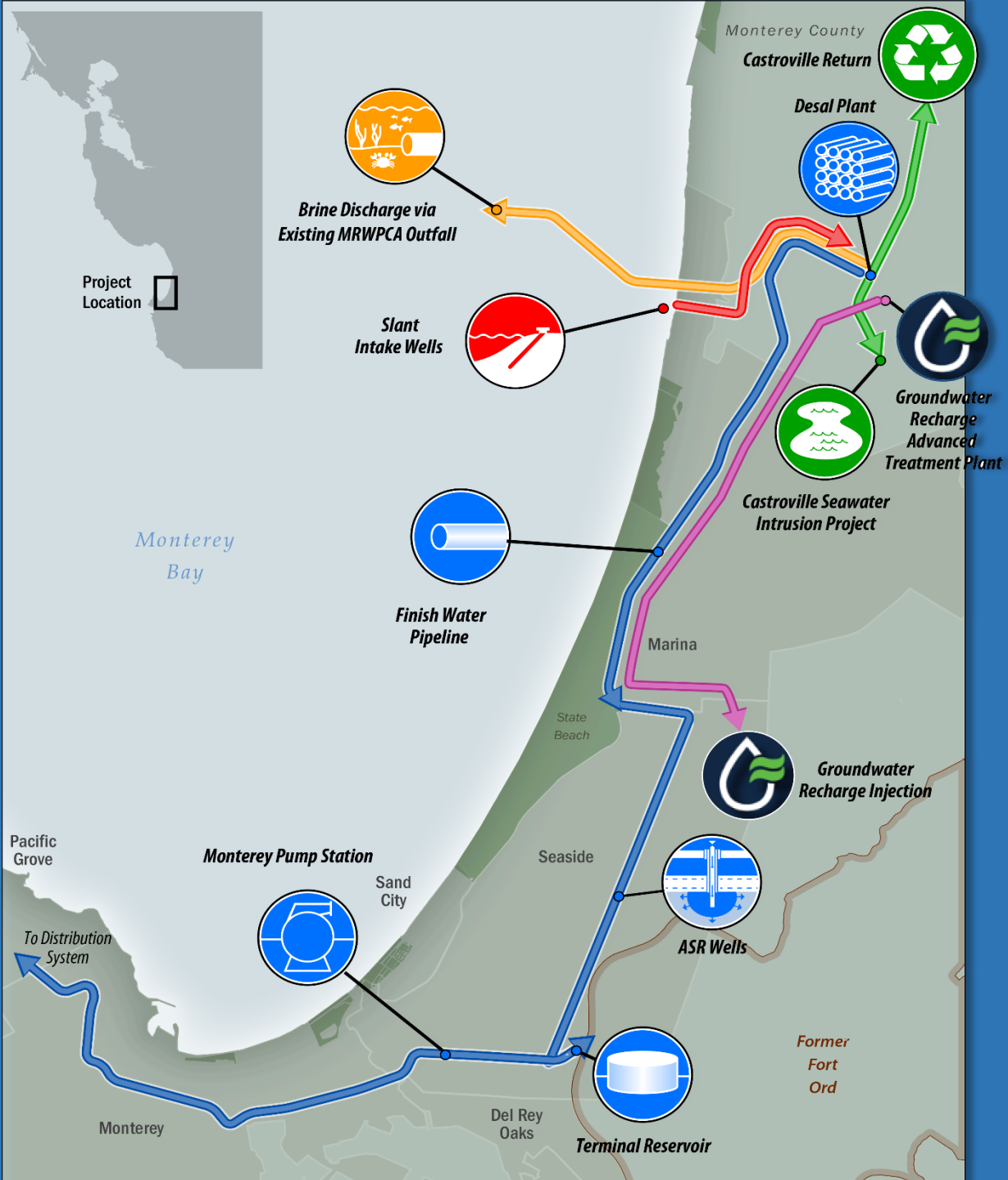


HISTORIC WATER SOURCES



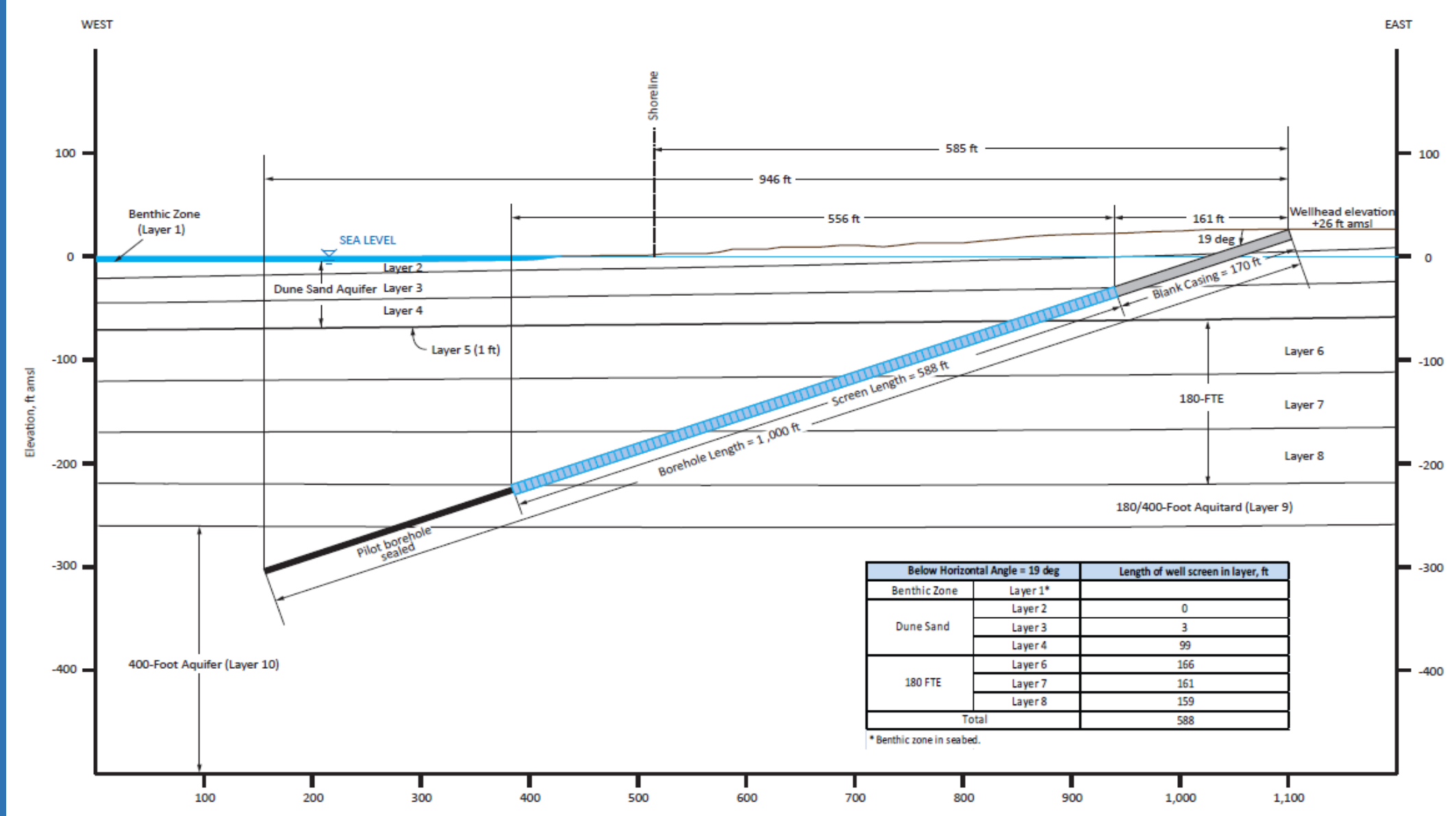
FUTURE WATER SOURCES

PROJECT OVERVIEW



Project Component	Cost (M)	Cost (M)
	9.6 MGD	6.4 MGD
Desal Plant	\$124	\$115
Pipelines, Terminal Reservoir & BPS	\$128	\$128
Intake Wells & Return Systems	\$86	\$79
Total Cost	\$338	\$322

SLANT WELL PROFILE



WATER PROJECT

KEY BENEFITS

- ▶ **RESTORES** CARMEL RIVER
- ▶ **REPLENISHES** SEASIDE BASIN
- ▶ **MINIMIZES** OCEAN LIFE IMPACT
 - SUBSURFACE INTAKES
 - DIFFUSED OUTFALL
- ▶ **SEEKS** GREEN ENERGY SOURCES



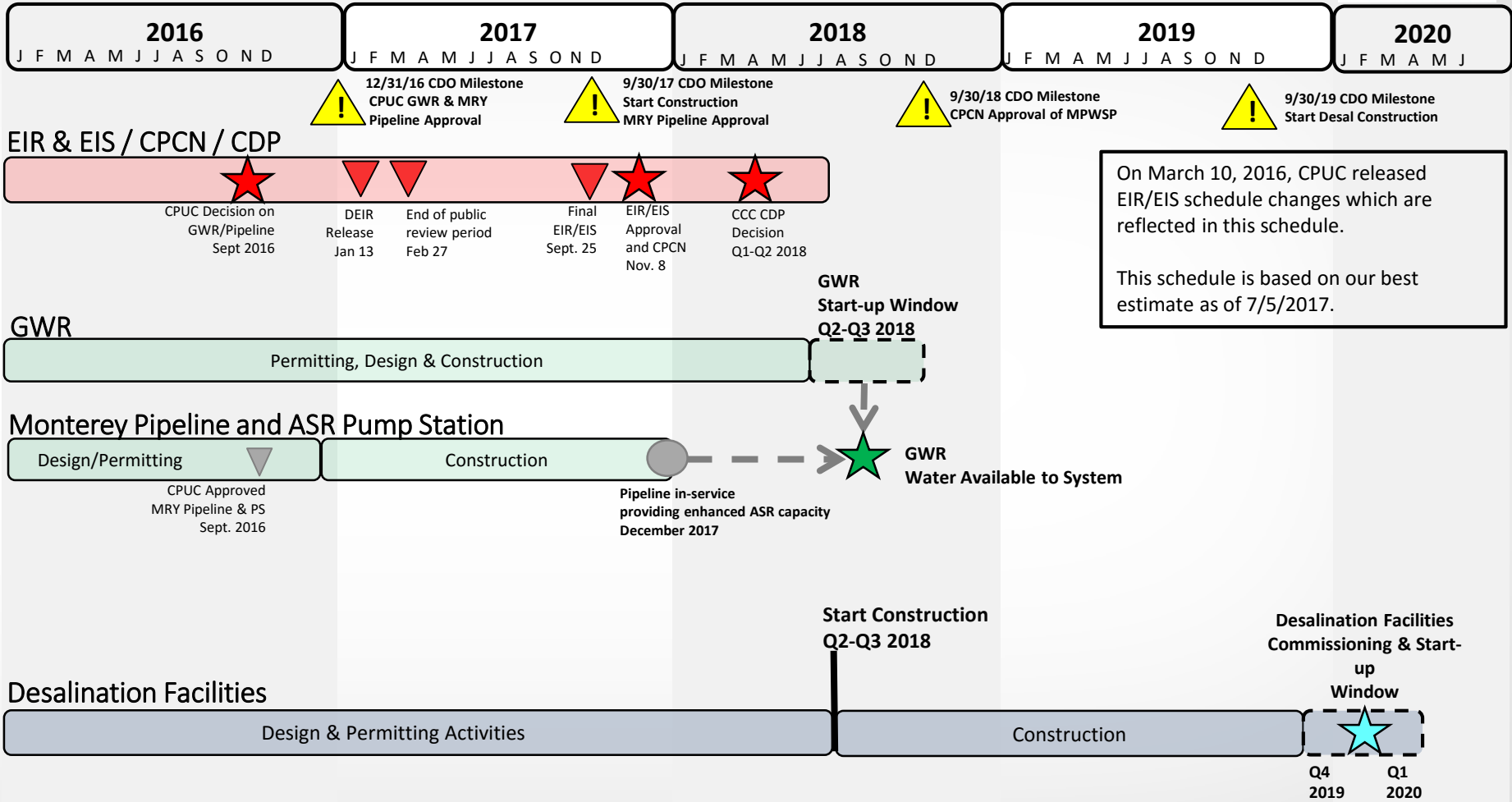
PUBLIC PARTICIPATION

- ▶ **Governance**
- ▶ **Public investment** – reduce cost
- ▶ **Environmental** – slant wells, diffused outfall
- ▶ **Salinas Basin** – aquifer modeling, Hydro Working Group
- ▶ **Consensus** – 16-party settlement

- CALIFORNIA AMERICAN WATER
- CITIZENS FOR PUBLIC WATER
- CITY OF PACIFIC GROVE
- COALITION OF PENINSULA BUSINESSES
- COUNTY OF MONTEREY
- DIVISION OF RATEPAYERS ADVOCATES
- LANDWATCH MONTEREY COUNTY
- MONTEREY COUNTY FARM BEREAU
- MONTEREY COUNTY WATER RESOURCES AGENCY
- MONTEREY PENINSULA REGIONAL WATER AUTHORITY
- MONTEREY PENINSULA WATER MANAGEMEN DISTRICT
- MONTEREY REGIONAL WATER POLLUTION CONTROL AGENCY
- PLANNING AND CONSERVATION LEAGUE
- SALINAS VALLEY WATER COALITION
- SIERRA CLUB
- SURFRIDER FOUNDATION



MPWSP Anticipated Schedule



Note: The schedule is based on the information and assumptions available at time of update and is accurate to +/-6 months.

QUESTIONS

