

# **Update on Conservation and Executive Order B-40-17**

**Erik Ekdahl**

**Director**

**Office of Research, Planning, and Performance**

**May 18, 2017**



# Background

5 years of  
Drought

Mandatory  
Conservation

Framework  
Report  
EO B-40-17



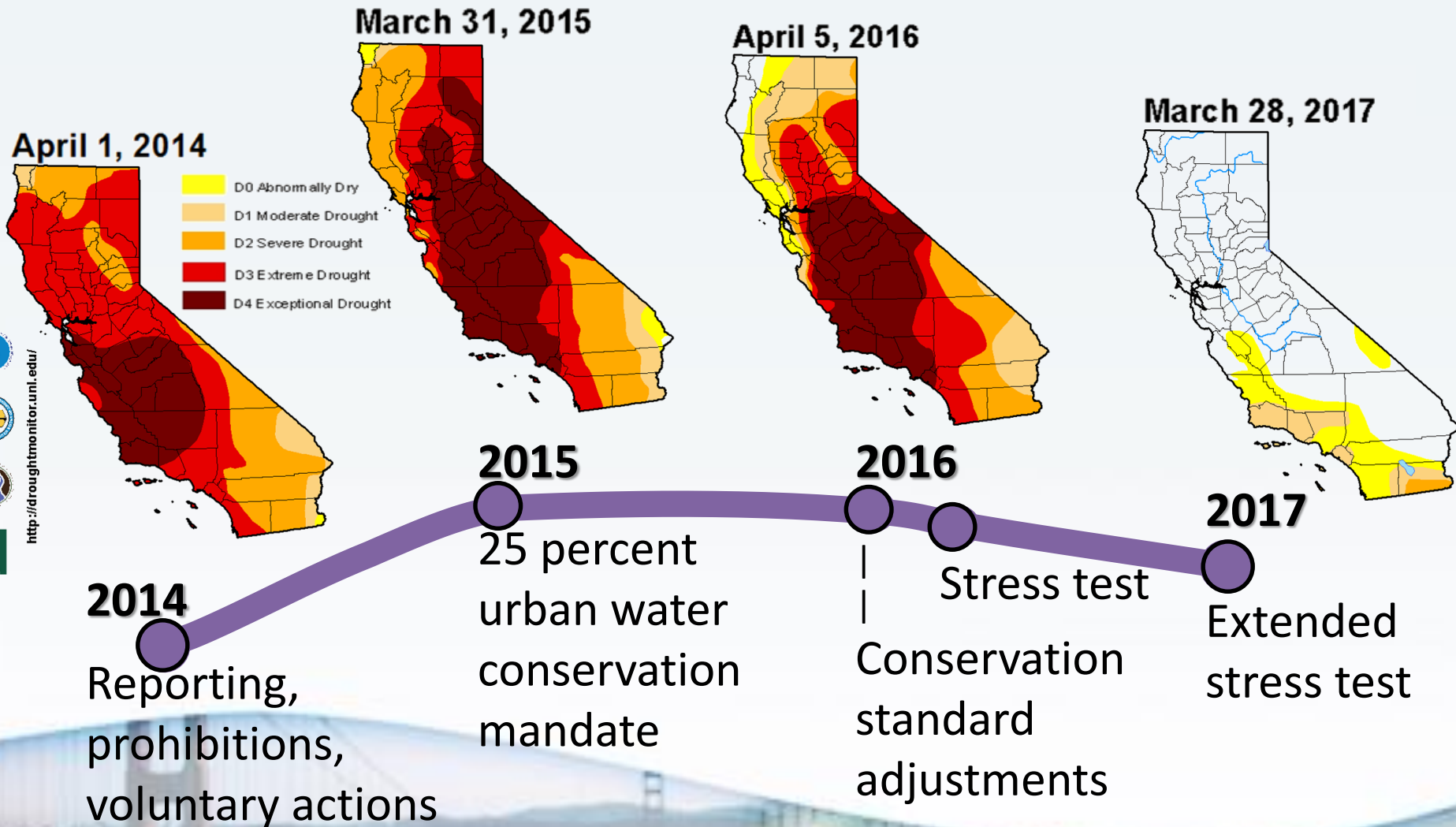


# California's Drought



- **2015 - 4<sup>th</sup> dry year statewide**
- January 2015 – Driest in most areas
- 2014 - Warmest year on record
- **2012-2014 - Driest 3 years on record**
- 2015 - Record Low Snowpack
- February 2016 – Warmest Feb in SoCal
- **Statewide storage - low**
- **Groundwater basins in decline**

# Conservation Approach Evolved over Time



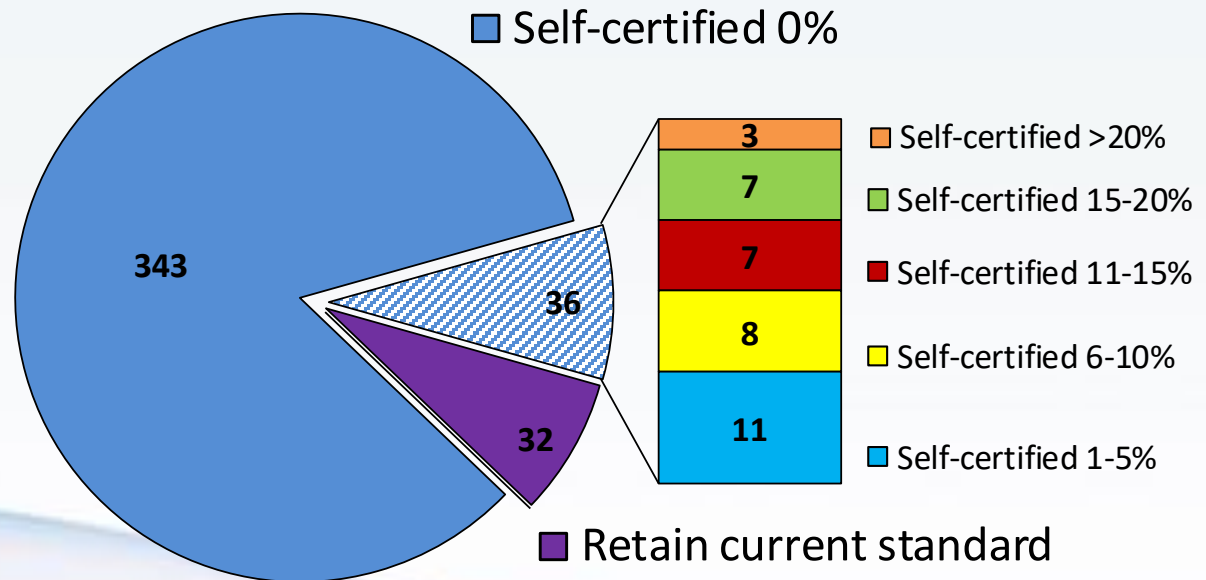
# Emergency Regulation Components

1. Conservation standards for Urban Water Suppliers (2015-16); stress test June 2016-April 2017.
2. Prohibited water uses and other end-user requirements
3. Enforcement Provisions
4. Requirements for “self-supplied” Commercial, Industrial, and Institutional Users
5. Requirements for smaller suppliers
6. Reporting Requirements



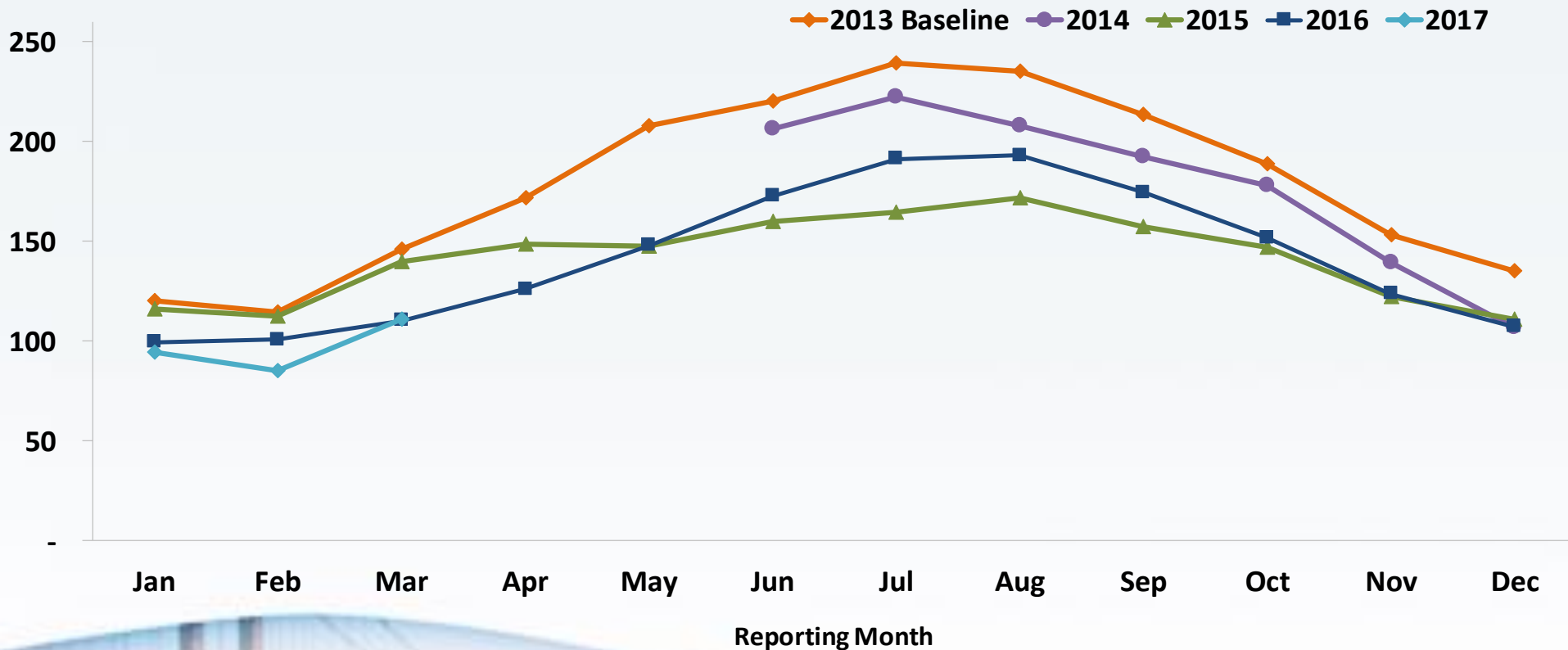
# May 2016 Emergency Regulation

- Conservation standards based on supply reliability
  - “Stress test” under additional three years of drought
  - Option to maintain state-mandated conservation standard



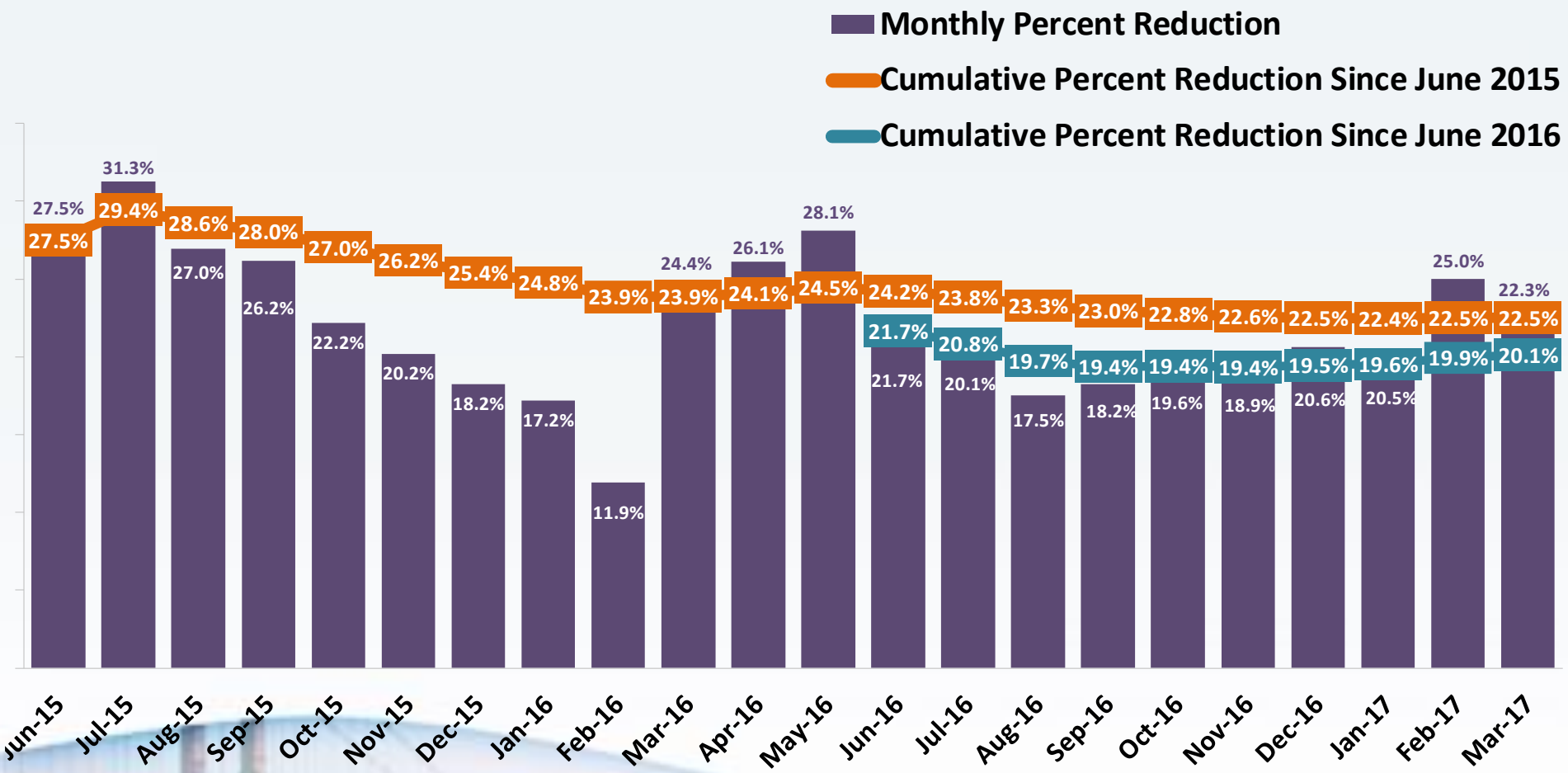
# Statewide Monthly Urban Water Production

(Billion gallons)





# Statewide Water Production Percent Reduction (Compared to 2013)



Average Statewide March 2017 R-GPCD = 67

# Statewide Cumulative Savings

(June 2015 – March 2017)

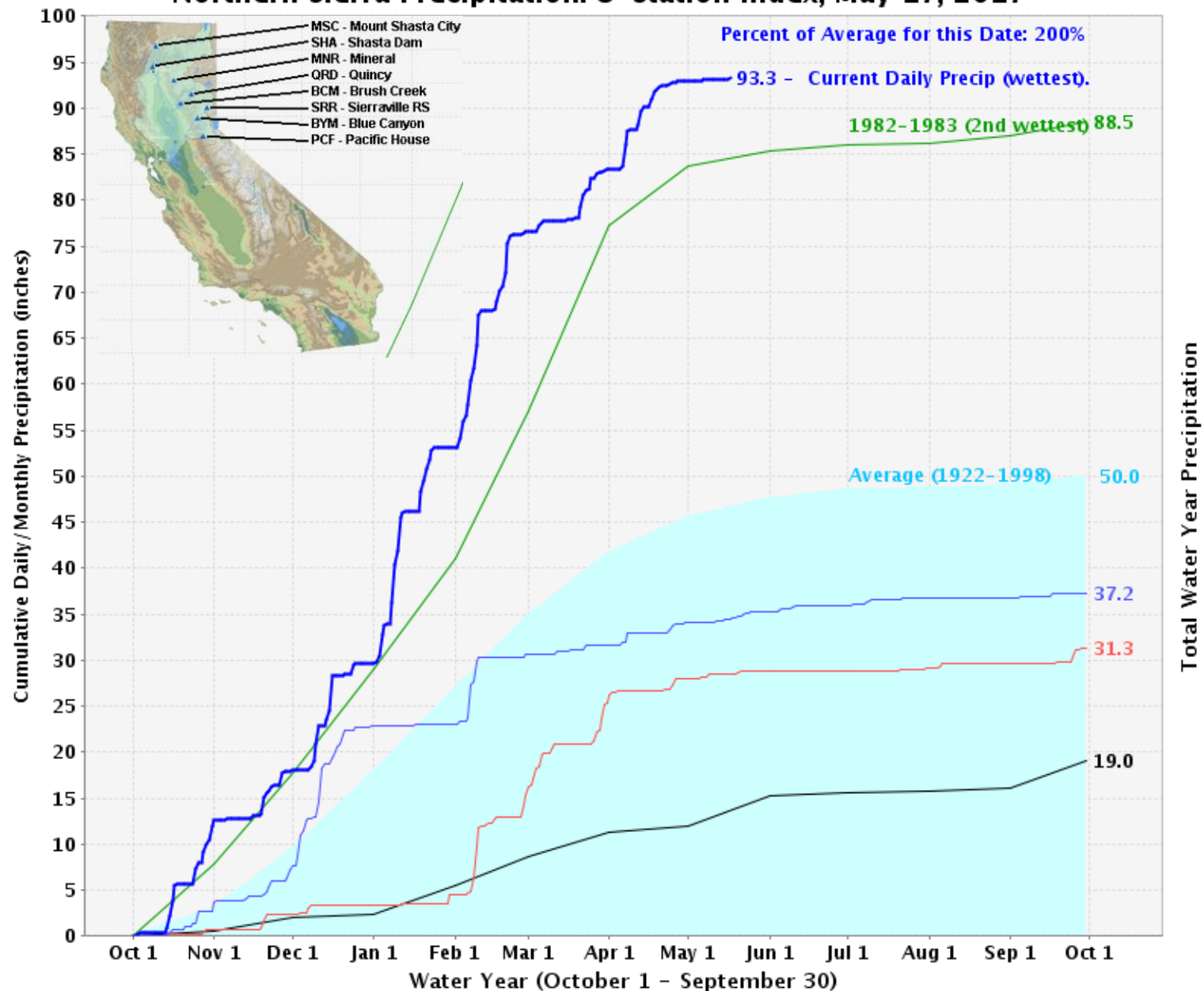
- 22.5 percent since June 2015: 2,695,205 acre-feet (878.2 billion gallons)
  - Enough to provide 34% of state population with water for one year







# Northern Sierra Precipitation: 8-Station Index, May 17, 2017





# Executive Order B-40-17

- Issued on April 7<sup>th</sup>, 2017
- Lifted drought emergency for all but four counties
- Transition to long-term framework  
(Conservation as a California Way of Life)



# Drought Proclamation Lifted

Governor issued Executive Order B-40-17 on April 7:

- End stress tests and mandatory conservation levels
- Maintain prohibitions against wasteful practices and monthly water use reporting
- Executive Director action on April 26
  - Prohibitions and reporting requirements effective through November
  - Long-term regulations under development





# Permanent Prohibitions & Reporting

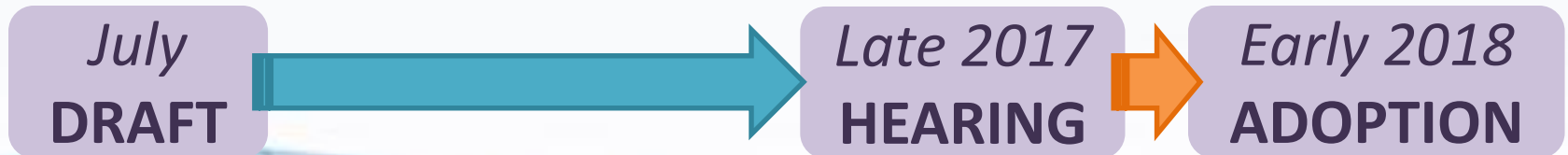
- Irrigation that causes runoff into street
- Washing vehicle without shutoff nozzle
- Application of potable water to driveways, sidewalks, or in non-recirculating fountains
- Irrigation within the 48 hours after measurable precipitation
- Irrigating turf in medians
- Drinking water in restaurants, laundry in hotels
- Continue reporting monthly production

# Board Regulations: Timeline

- Regulation for permanent reporting

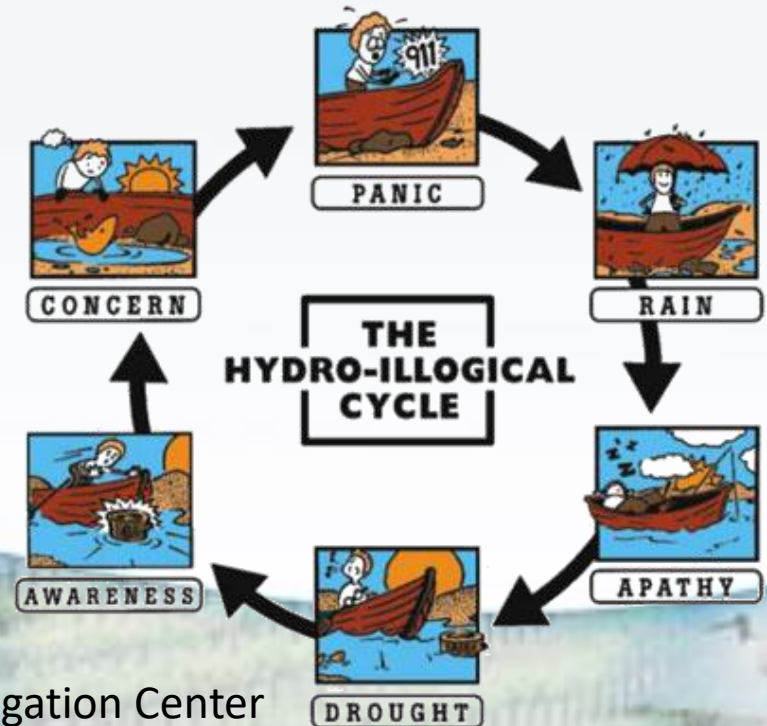


- Regulation for permanent prohibitions



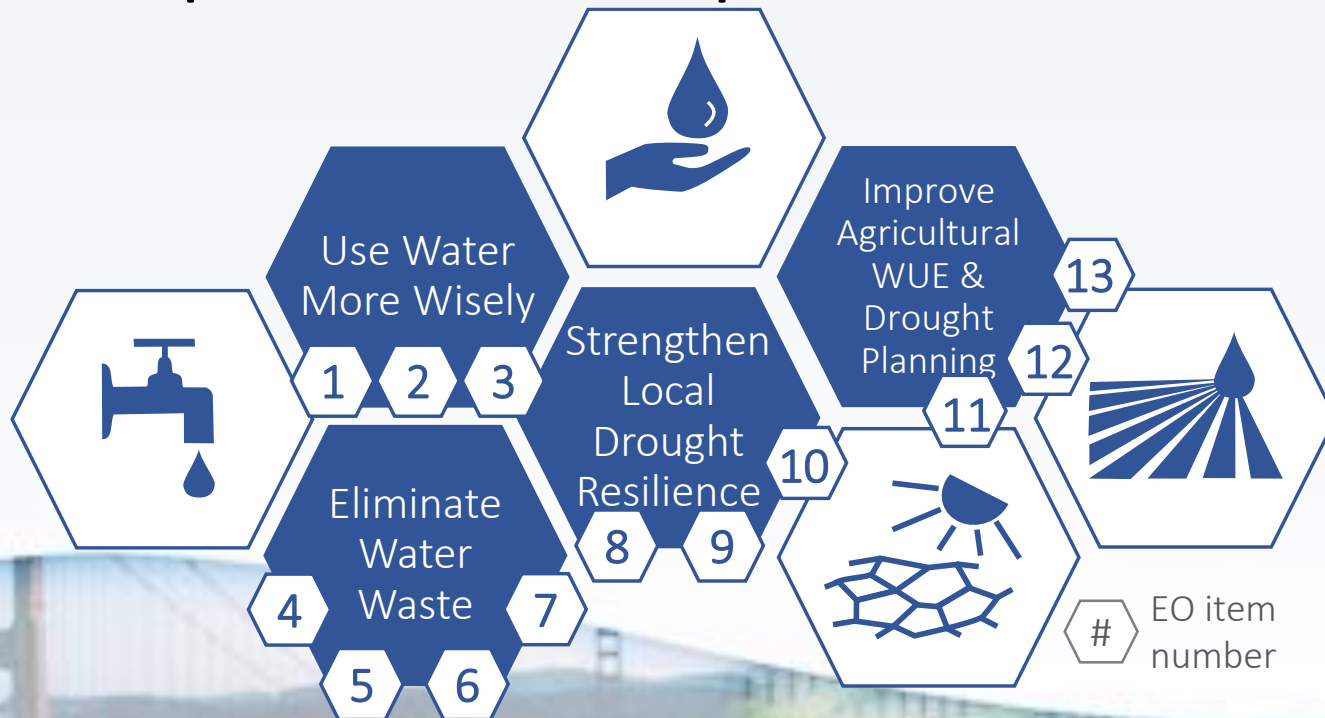
# Making Conservation a California Way of Life

- Governor's Executive Orders in 2015 and 2016
  - EO B-37-16 establishes long-term conservation goals and improves drought planning
- Breaking the reactive cycle



# Framework Report

- Required by Executive Order B-37-16
- Final Report released April 7<sup>th</sup>, 2017



# Standards-based efficiency targets (Water Budgets) by 2025

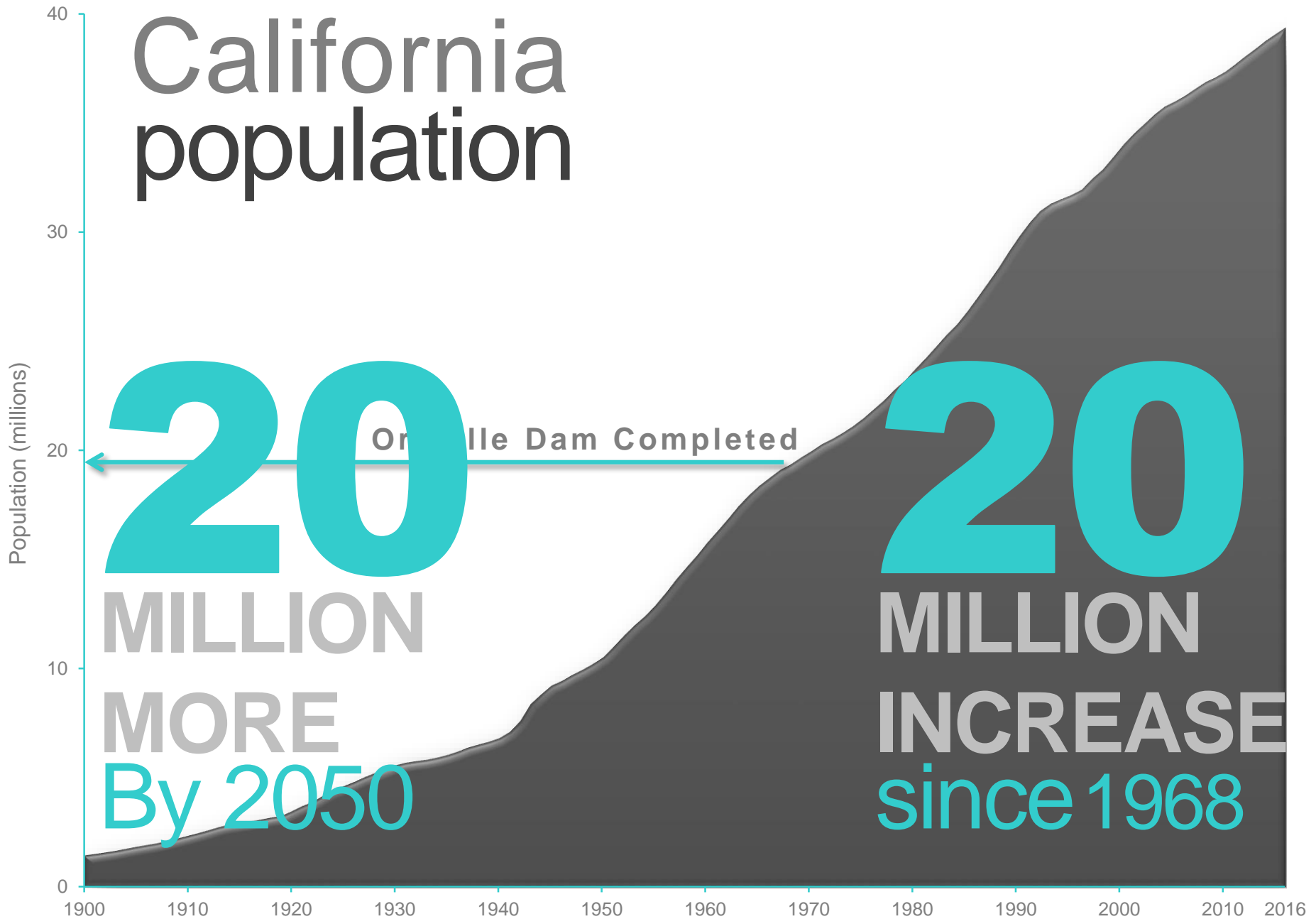
- Indoor water use (interim: 55 gpcd)
- Outdoor water use (based on local evapotranspiration)
- Water lost through leaks (SB 555 process)
- Commercial, Industrial, and Institutional (CII) best management practices

# Framework Implementation





# California population



Source: California Department of Finance estimates

# Thank You!

Erik Ekdahl

Off. Of Research, Planning and Performance

[Erik.Ekdahl@waterboards.ca.gov](mailto:Erik.Ekdahl@waterboards.ca.gov)

916-341-5316



## **Additional Information:**

DWR – <http://www.water.ca.gov/wateruseefficiency/conservation/>

State Board –

[http://www.waterboards.ca.gov/water\\_issues/programs/conservation\\_portal/](http://www.waterboards.ca.gov/water_issues/programs/conservation_portal/)