

The Sacramento Groundwater Authority

A GSA Before Its Time

California Water Association
May 19, 2016

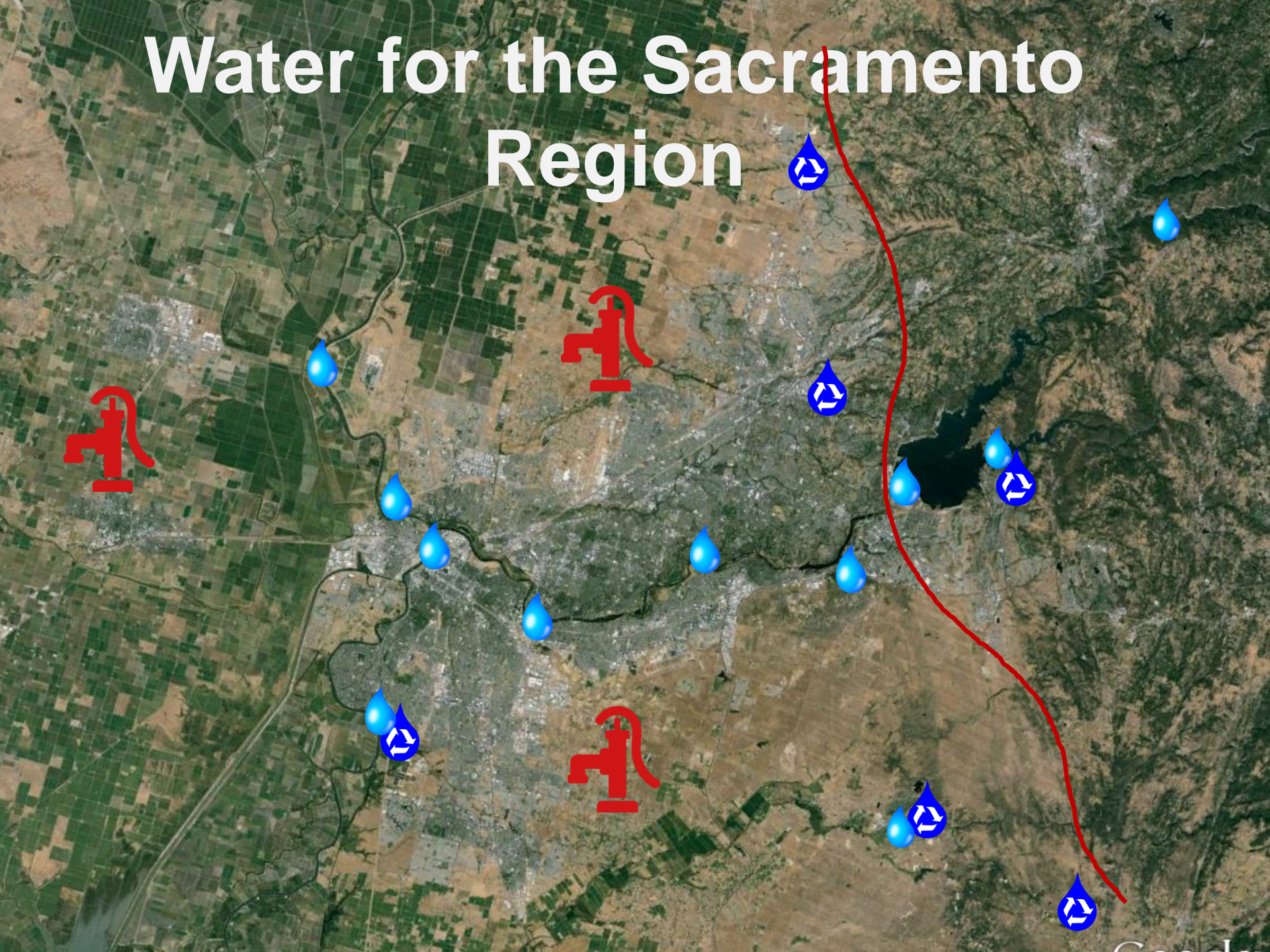


SACRAMENTO GROUNDWATER AUTHORITY

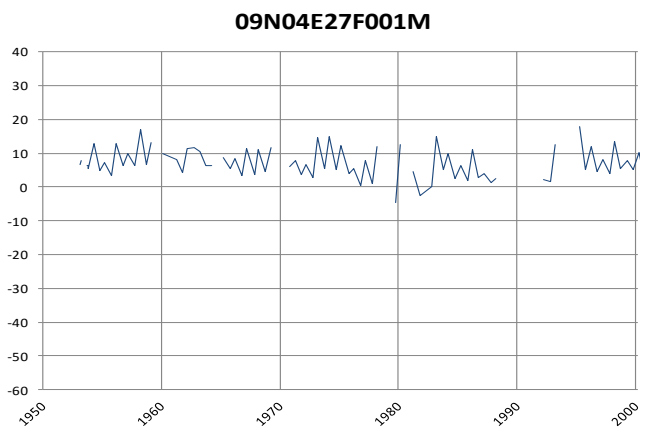
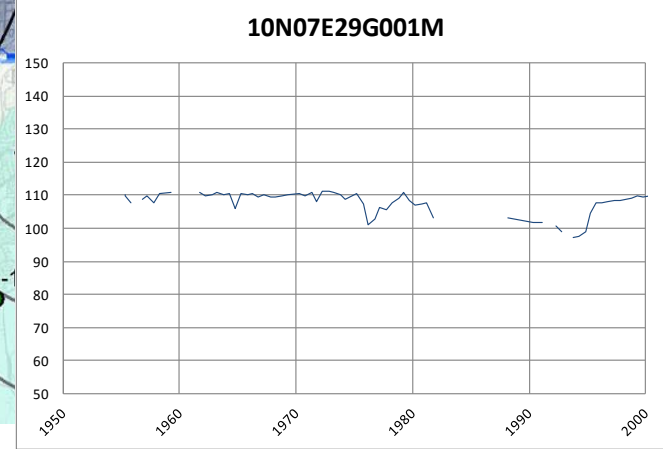
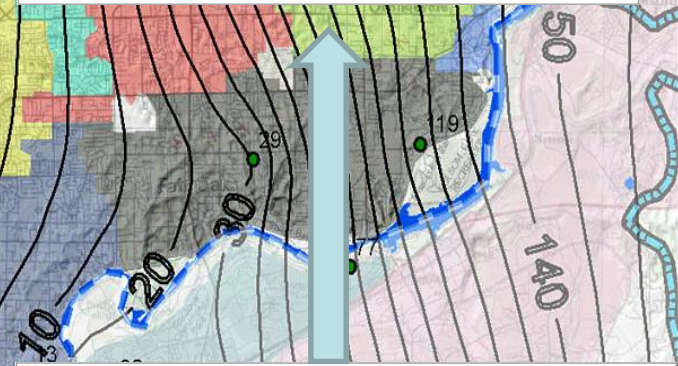
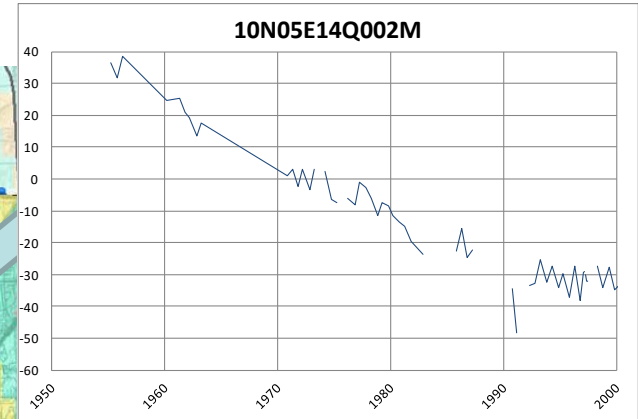
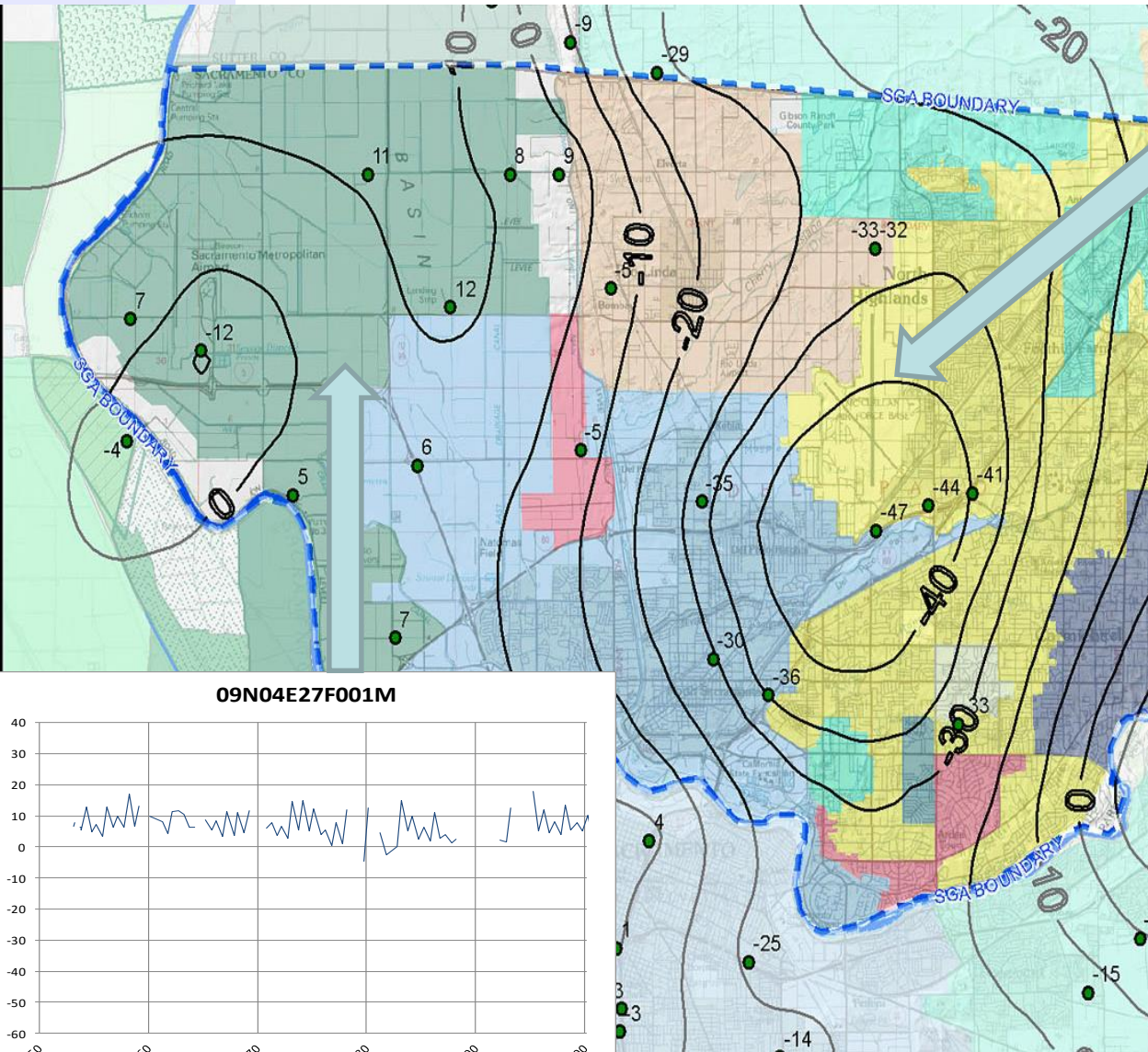
Overview

- The Sacramento Region
- Groundwater Challenges
- Water Forum Agreement
- SGA Structure
- SGA Funding
- Water Accounting Framework
- Results
- Challenges

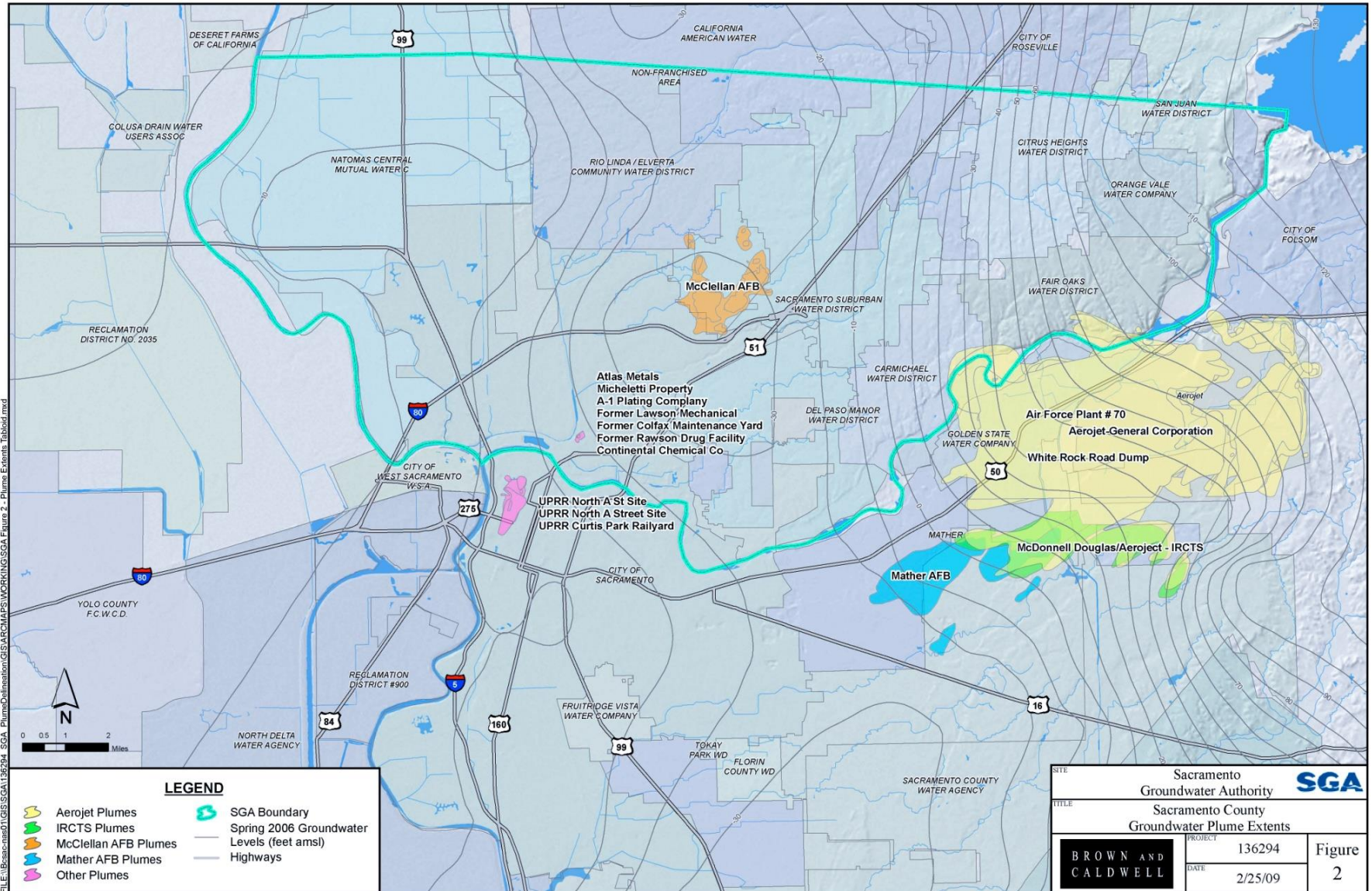
Water for the Sacramento Region



Historic Groundwater Levels



Regional Contamination Plumes



FILE: \\bsac-natd1\GIS\SGA\136294_SGA_Plume\Information\GIS\ARCHMAPS\WORKING\SGA Figure 2 - Plume Extents_Tibbels.mxd

Water Forum Agreement

**Provide a Reliable Water
Supply to 2030
And
Protect the Lower
American River**

**Improved
Flow Standard**

Habitat Management

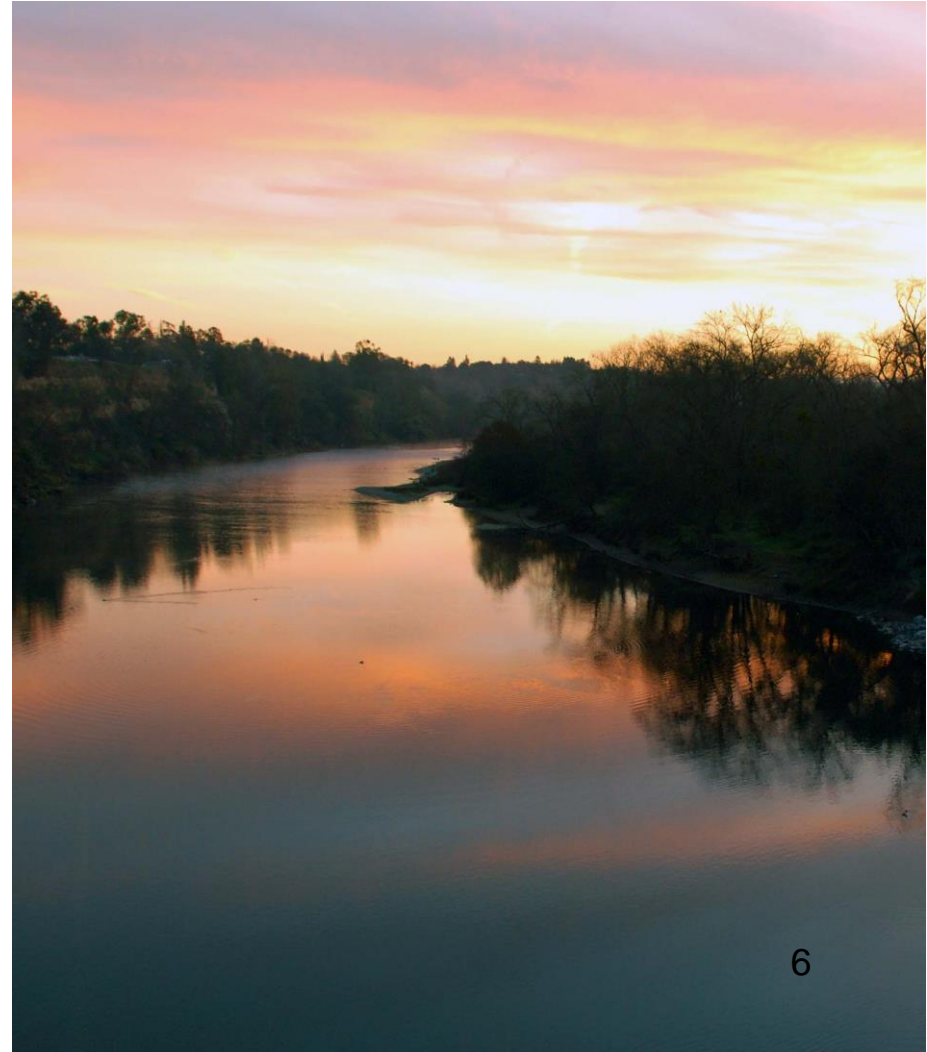
**Improve Water
Conservation**

**Groundwater
Management**

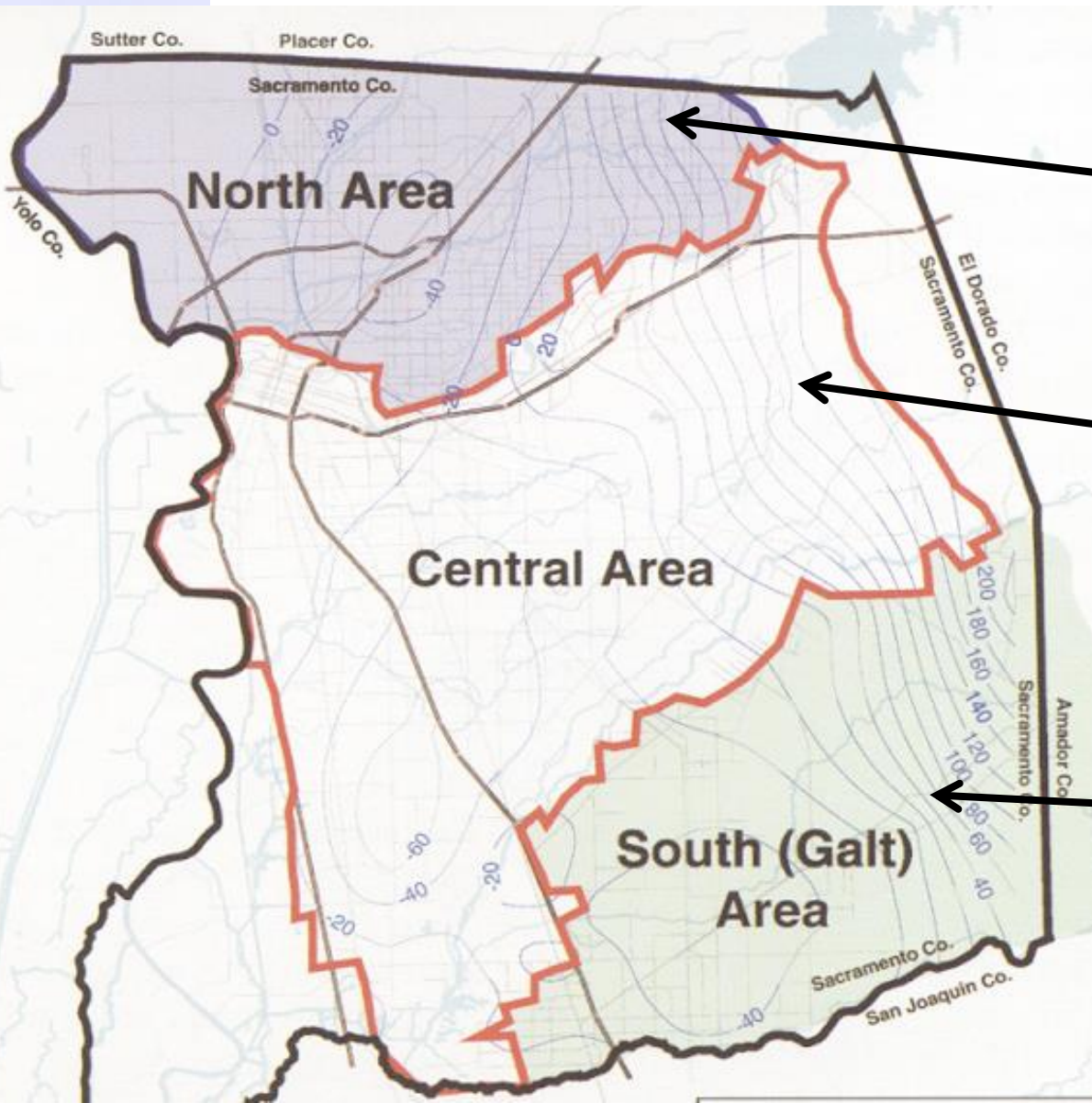
**Increased
Surface Water
Diversions**

Dry Year Actions

**Water Forum
Successor Effort**



Groundwater Management Areas

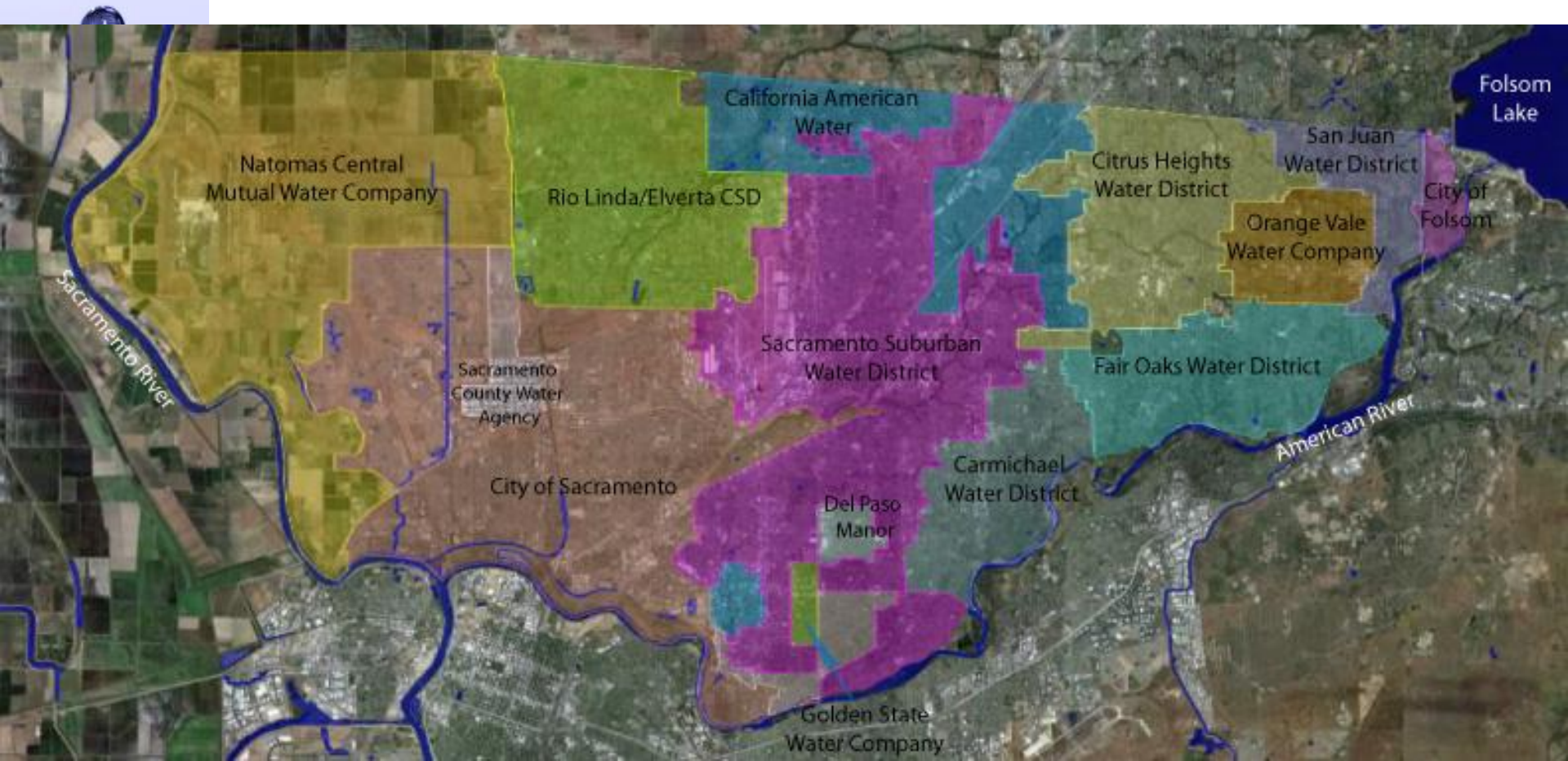


Sacramento Groundwater Authority
(formed 1998)

Sacramento Central Groundwater Authority
(formed 2006)

What is SGA?

Joint powers authority by cities of Citrus Heights, Folsom, and Sacramento and Sacramento County using common police powers to manage basin.



Representation

- Board members appointed from
 - Public Water Agencies (10)
 - Private Water Suppliers (2)
 - Mutual Water Companies (2)
 - Self-Supplied Agriculture* (1)
 - Self-Supplied Industry* (1)

*non-fee payer

SGA Funding Model

Two Components

1. Groundwater Extraction Fees
 - \$4.20 per acre foot fee
 - Contributes approx. 62% of overall budget
2. Base Administrative Fee
 - Agencies that receive only surface water benefit from management of groundwater basin
 - Minimum fee is \$7,077 + \$0.89 per connection
 - Contributes approx. 38% of overall budget

Annual Operating Budget - \$500,000

Staffing – 2.3 FTE



Sustainability Goal

Agency	Pumping Prior to SGA (ac-ft)	Sustainability Reduction (ac-ft)	Sustainable Target (ac-ft)
Carmichael WD	7,516	870	6,646
City of Sacramento	23,287	2,696	20,591
California American Water	20,351	2,356	17,995
Del Paso Manor WD	1,657	192	1,465
Golden State WC	1,242	144	1,098
Rio Linda/Elverta Community WD	3,259	377	2,882
Sacramento County WA	4,850	562	4,288
Sacramento Suburban WD	39,622	4,587	35,035
Total	101,784	11,784	90,000

American River Basin Conjunctive Use Program



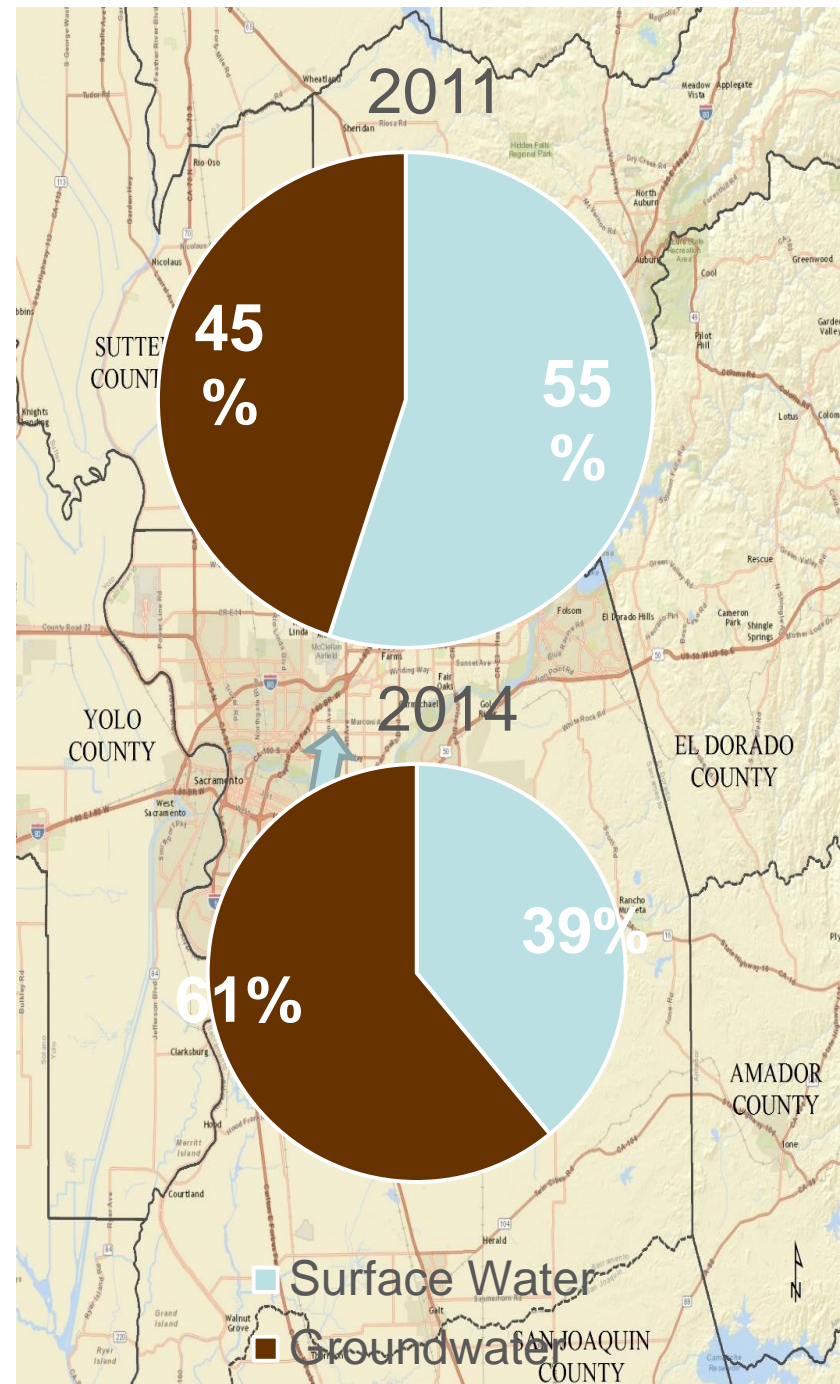
Large-Scale Conjunctive Use Infrastructure

Cooperative Transmission Pipeline and Howe Transmission Pipeline/Enterprise Facility

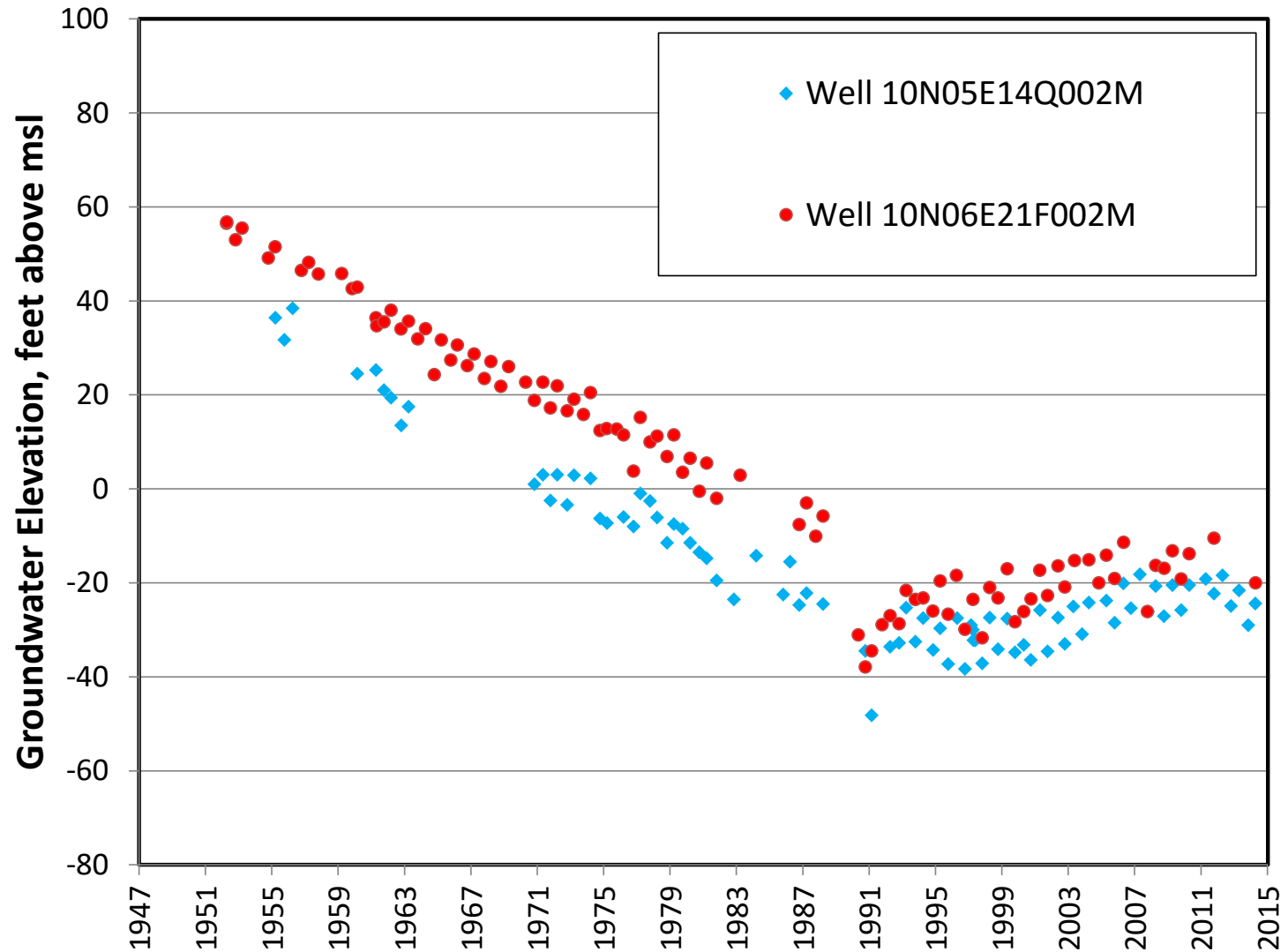
- Received >300 TAF since mid-1990s

Freeport Regional Water Project

- 185 MGD intake (2010)
- 85 MGD in County
- 50 MGD SWTP in County, expandable to 100 MGD



Groundwater Management Results



What About SGMA

- Declared intent to be GSA – 10/2015
- Confirmed as Exclusive GSA
- Share North American Subbasin with Western Placer County and Southern Sutter County
- Multiple GSAs
- Common GSP?
- Alternative?

A wide, calm river flows through a landscape with autumn-colored trees on the banks. In the center of the river, a small white boat with three people on board is visible. The foreground shows a rocky shoreline with some vegetation. The sky is blue with light clouds.

John Woodling
jwoodling@rwah2o.org