

BAY DELTA CONSERVATION PLAN



CALIFORNIA WATER ASSOCIATION ANNUAL CONFERENCE

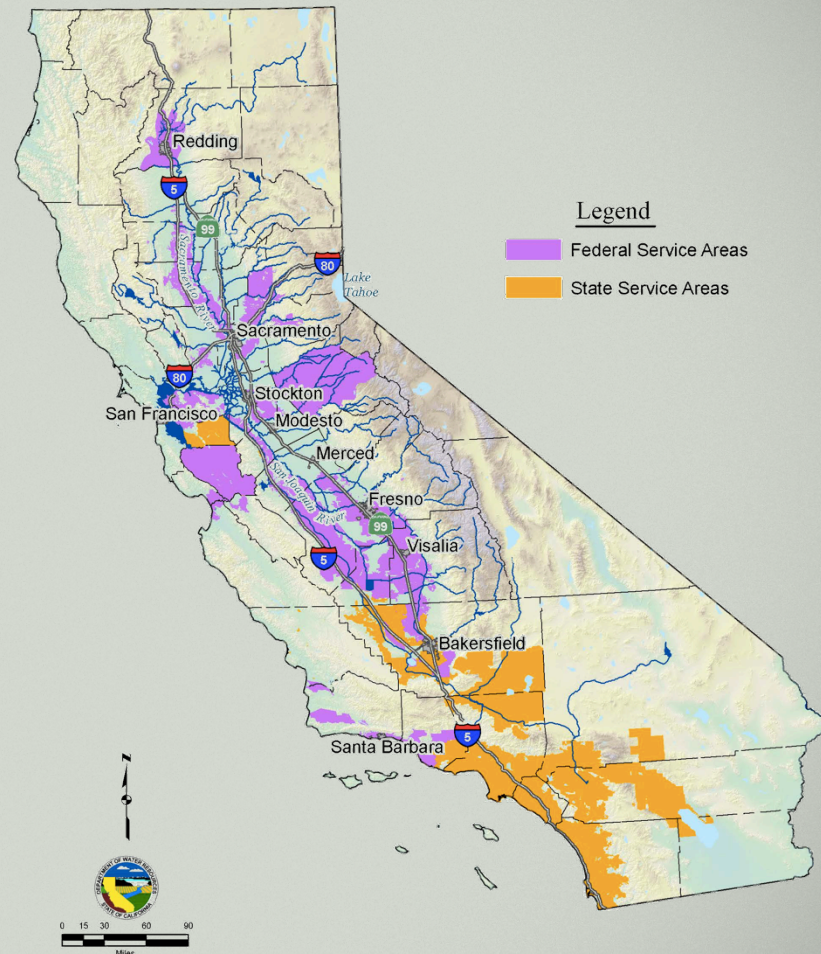
Janet Barbieri, *JB Comm, Inc.*

November 13, 2014

AREAS SERVED BY DELTA WATER SUPPLIES

Regions relying on water flowing through the Delta:

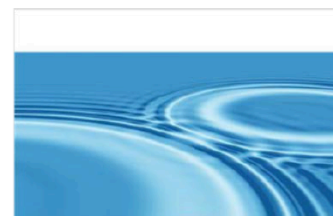
- Bay Area= 33%
- Central Valley = 23-90%
- Southern CA = 30%
- Some regions 100% dependent



CALIFORNIA WATER ACTION PLAN

- ✓ Final plan released in January 2014
- ✓ Outlines Governor's plan for water resources over next 5 years
- ✓ Highlights priorities for key areas
- ✓ Developed with stakeholder input
- ✓ Implementation of plan is moving forward

California Water Action Plan



The final California Water Action Plan is available at
http://resources.ca.gov/california_water_action_plan/

TOP 10 ACTIONS

1. Make conservation a California way of life
2. Increase regional self-reliance and integrated water management across all levels of government
3. Achieve the co-equal goals for the Delta
4. Protect and restore important ecosystems
5. Manage and prepare for dry periods
6. Expand water storage capacity and improve groundwater management
7. Provide safe water for all communities
8. Increase flood protection
9. Increase operational and regulatory efficiency
10. Identify sustainable and integrated financing opportunities

✓ **The Water Action Plan identifies specific methods to comprehensively address each action.**

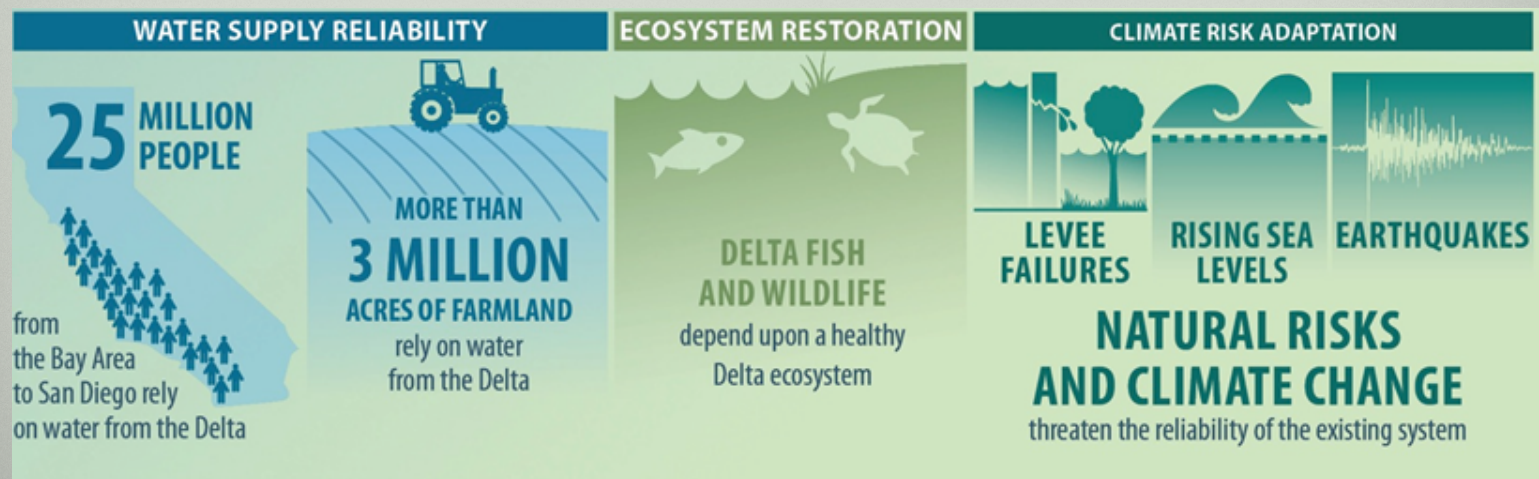
PLAN IMPLEMENTATION AND DROUGHT



- ✓ 2014 drought conditions highlight what is at stake.
- ✓ CA's population is growing and the effects of climate change will worsen.
- ✓ The Water Action Plan includes both immediate steps as well as actions that will better prepare California for future droughts.
- ✓ Identifies actions and investments that will help protect our resources from more frequent and severe dry periods.
- ✓ Proposes “both – and” solutions. No single solution will solve all of the states problems.

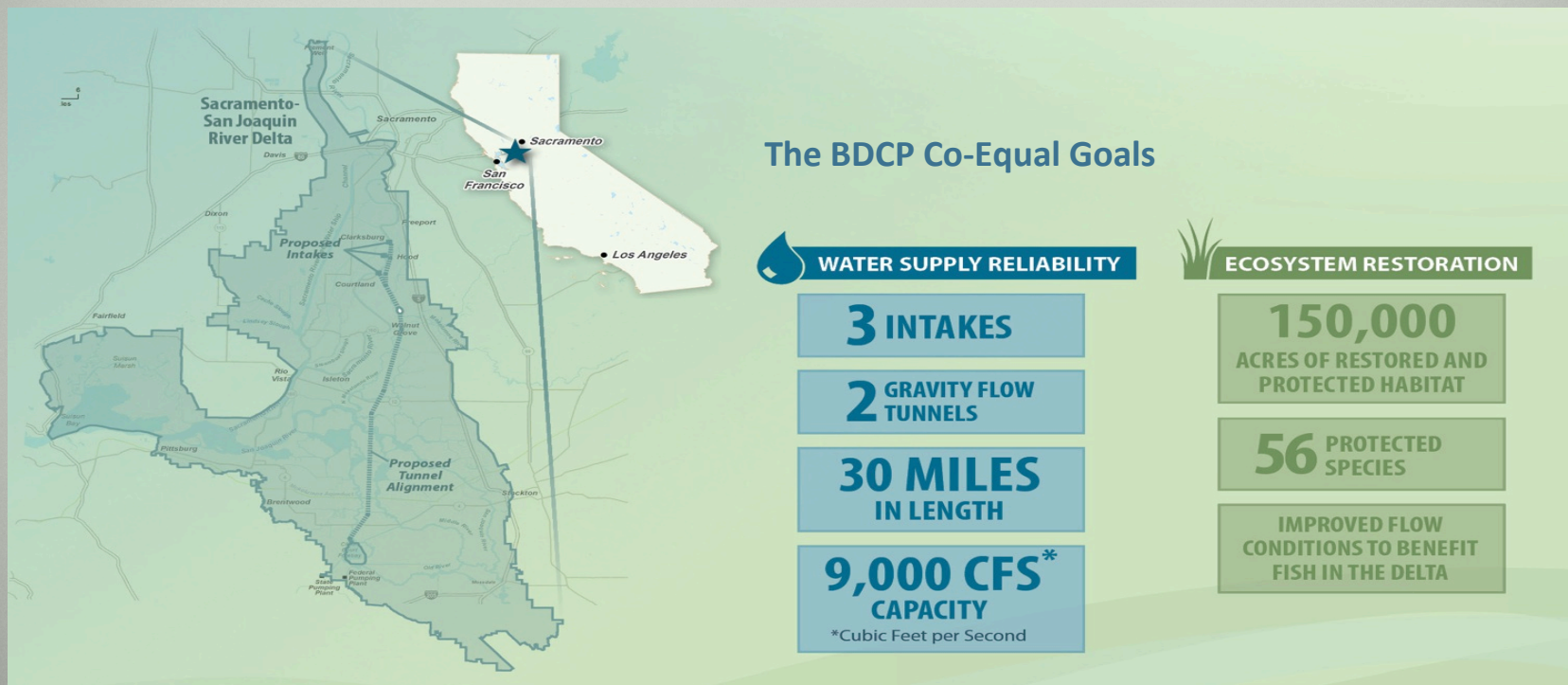
BAY DELTA CONSERVATION PLAN (BDCP)

- ✓ Part of the overall solution
- ✓ Developed as a long term solution to address the Delta ecosystem and water supply reliability
- ✓ Through implementation of comprehensive statewide water management actions, including additional storage capacity and BDCP, the state will have more flexibility to move and store water when it is available.



A LONG-TERM STRATEGY...

...To secure California's water supplies, enhance the environment, and restore the health of the Sacramento-San Joaquin River Delta.



THE BDCP WOULD BENEFIT MILLIONS OF CALIFORNIANS

The BDCP is one part of California's overall water portfolio. It aims to protect our unique Delta ecosystem and secure water supplies for a vast part of the California economy.

SECURING WATER SUPPLIES



**4.7-5.6
MILLION ACRE-FEET ON
AVERAGE ANNUALLY**

(An acre-foot is roughly
as much water as two
California households
use, indoors and
outdoors, in a year)

CREATING & PROTECTING JOBS



**1.1 MILLION
FULL-TIME EQUIVALENT
JOBS CREATED AND
SAVED FOR CALIFORNIA**

(Based on a year by
year estimate)

BOOSTING THE ECONOMY



**\$84 BILLION
INCREASE IN
STATE ECONOMIC
PRODUCTIVITY**

THE BDCP WOULD BENEFIT THE DELTA ECOSYSTEM

DELTA RESTORATION

BDCP would contribute to the conservation of 56 species of fish, plants, and wildlife in the Delta.

45



SPECIES OF PLANTS & WILDLIFE CONSERVED

through protection and enhancements in the quantity and quality of habitat in the Delta.

52%



INCREASE IN PROTECTED LAND in the Delta

11



FISH SPECIES BENEFIT,
from an increase in the amount and quality of habitat, food sources, and ecological function of Delta flows. Species include Chinook salmon and delta smelt.

10



OTHER STRESSOR REDUCTION MEASURES

would reduce adverse effects, such as invasive species, predation, and contaminants, to improve the ecological function of the Delta.

THE BDCP IS GUIDED BY THE BEST AVAILABLE SCIENCE



ADAPTIVE MANAGEMENT PROGRAM

to implement and
monitor BDCP biological
goals and objectives



WATER OPERATIONS

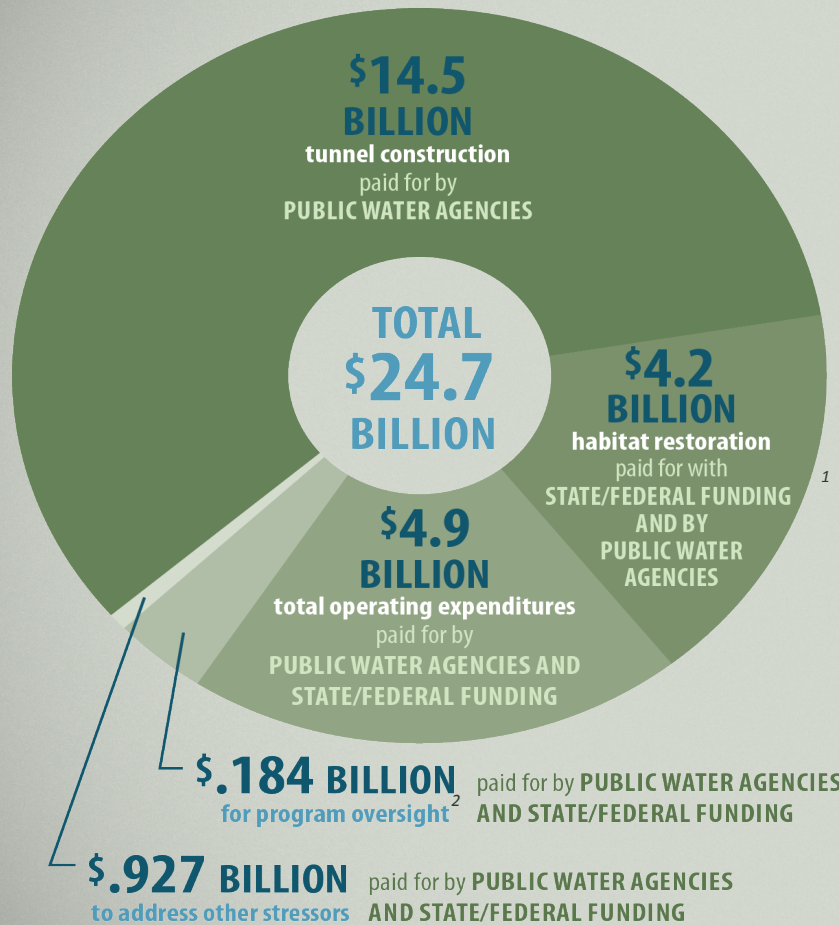
by the Department of
Water Resources and the
U.S. Bureau of Reclamation



OVERSIGHT

by state and federal
fish and wildlife agencies

COSTS AND FUNDING



The BDCP would be implemented over a 50-year period.

¹ The availability of federal funds will be contingent on future federal appropriations.

² Program oversight includes monitoring and research, management/administration, changed circumstances, and property tax revenue replacement.

EMPLOYMENT IMPACT

TOTAL EMPLOYMENT IMPACT

The BDCP protects and creates more than 1.1 million California jobs.

TOTAL WATER FACILITY JOBS

118,772

TOTAL HABITAT RESTORATION JOBS

36,318

WATER RELIABILITY JOBS

Statewide jobs created and protected due to economic impacts of improved water supply reliability.

 = 10,000



980,722




TOTAL BDCP JOBS

1,135,812

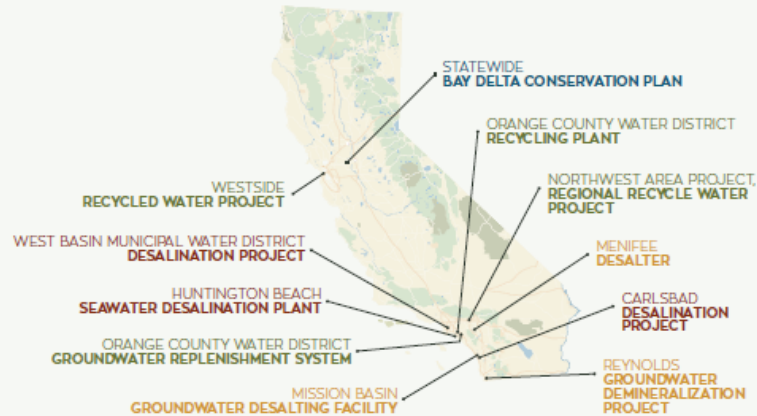
** All jobs are full-time equivalent (FTE), which is defined as one person working full-time for one year*

*** Source: The Brattle Group. Job Analysis Memo, May 21, 2014*

WHAT BDCP DOES AND DOES NOT DO

BDCP Does: 	BDCP Does Not: 	Other Projects Do: 
✓ Guard against climate change, sea level rise, and seismic risk	○ Alter existing water rights	✓ Provide for additional water storage
✓ Secure water supplies for 25 million Californians	○ Increase the amount of water exported from the Delta	✓ Manage or replenish groundwater basins
✓ Restore and protect the Delta ecosystem and improves flow conditions for fish	○ Change other state or federal regulations on water quality or water allocations	✓ Mandate additional water conservation
✓ Protect and conserve 56 species		
✓ Modernize a critical piece of California's water infrastructure		
✓ Protect jobs for 1 million Californians		

INTEGRATED WATER MANAGEMENT



Ranges developed based on sampling of California projects depicted on map above. Yield and cost ranges do not directly correspond to one another.

	WHOLESALE COST (PER ACRE FOOT)	ANNUAL YIELD (ACRE FEET)
STATE WATER PROJECT (AFTER IMPLEMENTATION OF BDCP)	\$800 - \$900 (PER ACRE FOOT)	~1.8 - 2.3 MILLION (TOTAL URBAN & AGRICULTURAL DELIVERIES OF 47 - 56 MAF)
RECYCLING	\$850 - \$8,200	1,200 - 72,000 ACRE FEET PER PROJECT
GROUNDWATER DESALINATION	\$750 - \$1,200	1,500 - 3,500 ACRE FEET PER PROJECT
SEAWATER DESALINATION	\$1,750 - \$2,300	20,000 - 56,000 ACRE FEET PER PROJECT

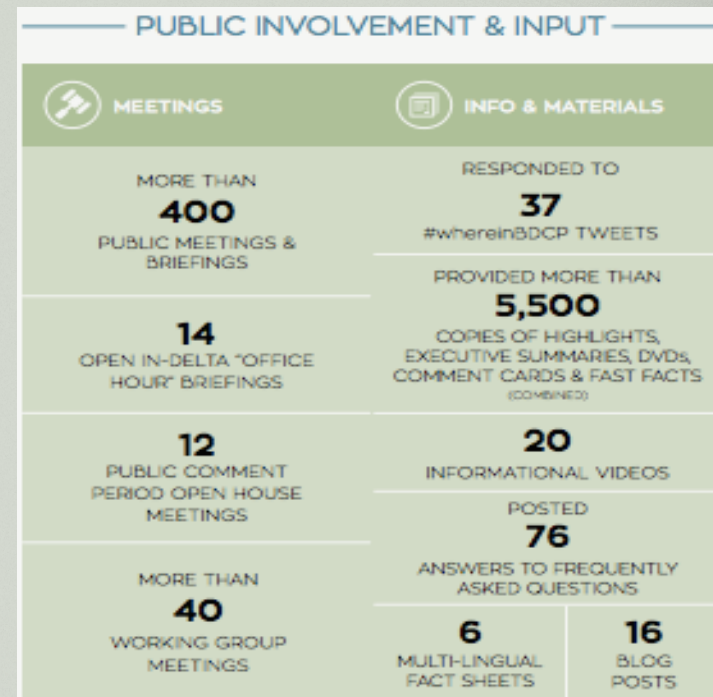
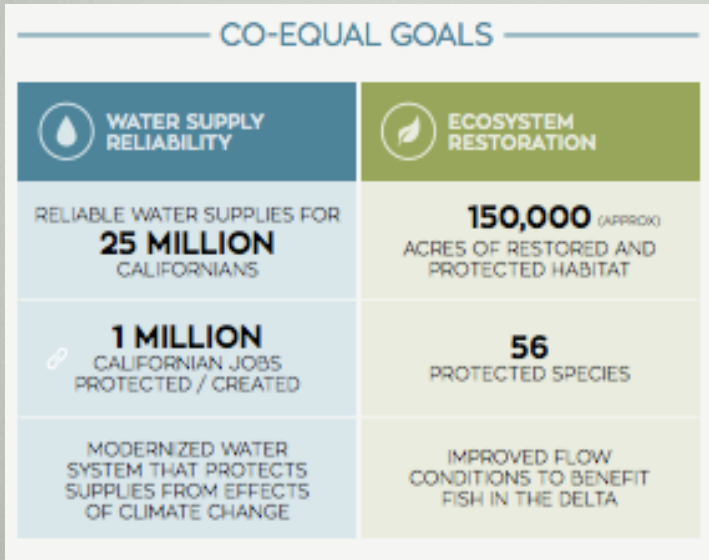
NOTES

- state water project costs displayed are specific to southern California costs including conveyance and treatment
- state water project yields are deliveries to urban areas assuming implementation of the BDCP. This is the urban share of the total 47 - 56 maf of BDCP deliveries

- ✓ BDCP is one part of CA's water supply solution
- ✓ Relying on a multitude of projects - many of them local and regional - to improve water use efficiency, conservation, and develop recycling and desalination projects
- ✓ Many of these are already underway, and the Water Bond includes additional funds.

PROGRESS IN ACHIEVING THE CO-EQUAL GOALS

An unprecedented level of public review, comment, and scientific input has helped refine and improve the BDCP.



BDCP DRAFT EIR/EIS ENVIRONMENTAL REVIEW PROCESS

- Draft Environmental Impact Report/Environmental Impact Statement and Implementing Agreement prepared by State and Federal agencies
 - Public comment period: December 13, 2013 - July 29, 2014 (228 days total)
 - Approximately 11,000 comment letters were received from a broad range of stakeholders, including local governments, elected officials, environmental, business, labor and community groups, and individuals.
 - Partial Recirculation of Draft EIR/ Supplemental Draft EIS expected in 2015.



STAY INVOLVED



- (866) 924-9955
- info@BayDeltaConservationPlan.com
- www.baydeltaconservationplan.com
-  "BDCP_CA"
-  Bay Delta Conservation Plan

QUESTIONS?

For more information, visit: www.BayDeltaConservationPlan.com

