

**Governor's
Water Action Plan
&
CA Water Plan
Update 2013**

**CWA Spring Conference
May 20, 2014**

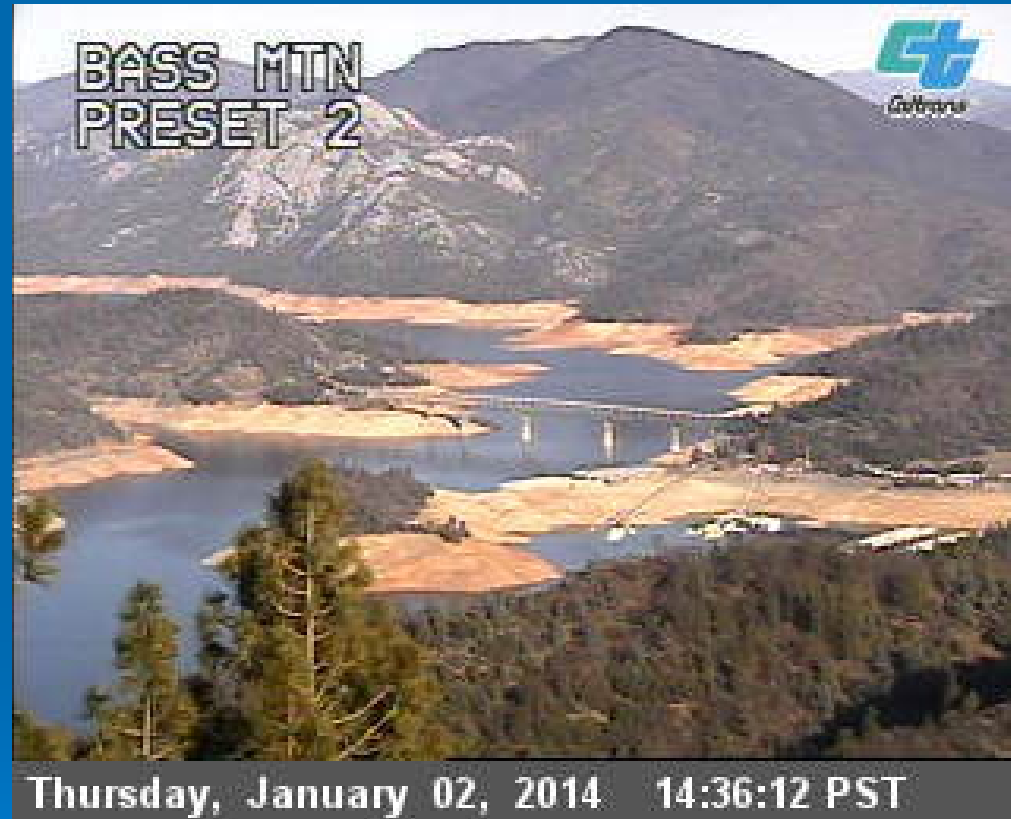


Highlights

2013-2014 Drought Conditions on May 16

- 3rd consecutive dry year
- Statewide Snow water content - **7% of average**
- Northern Sierra Precip – **61% of average**
- Southern Sierra Precip – **49% of average**
- Statewide unimpaired river runoff - **36% avg (April)**
- Most major reservoirs well below historical average
- SWP allocation - **5% in Sept.**

Lake Shasta / I-5 Bridge



State of California Actions

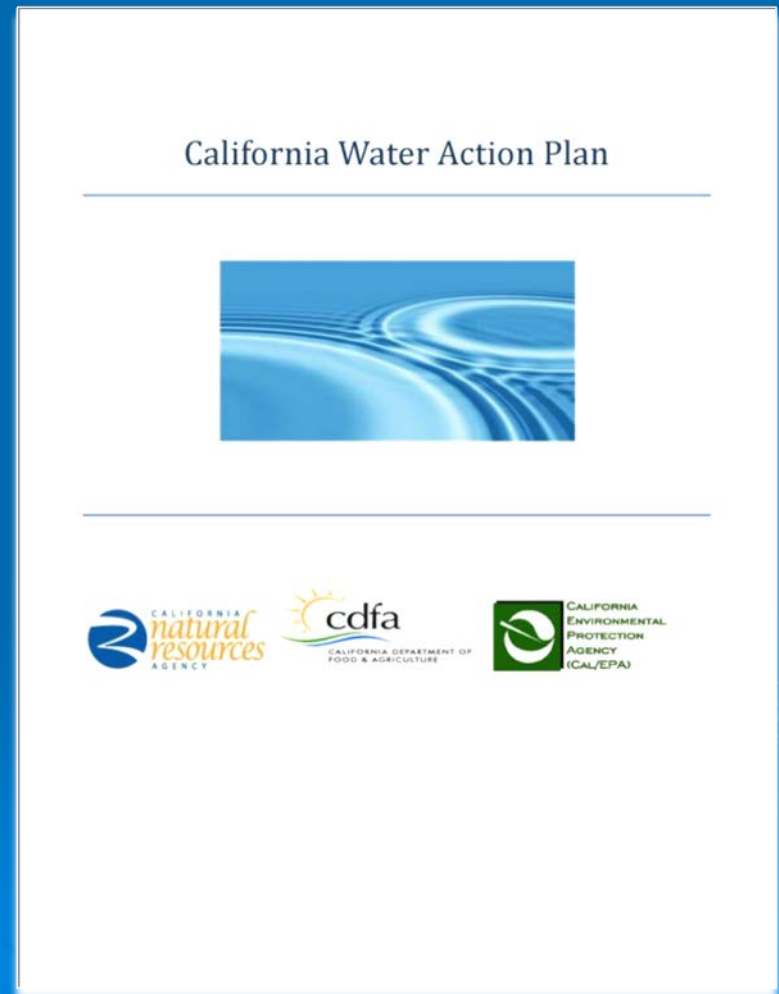
- EO to streamline water transfers (May 2013)
- PRD Governor's Water Action Plan & CA Water Plan Update 2013 (Oct 2013)
- State Drought Task Force Established (Dec 2013)
- Governor's Drought Proclamation & Water Action Plan (Jan 2014)
- Drought Emergency Funding (March)
- EO to redouble Drought Response (April)



Governor's Water Action Plan

A 5-Year Plan to Meet 3 Broad Goals

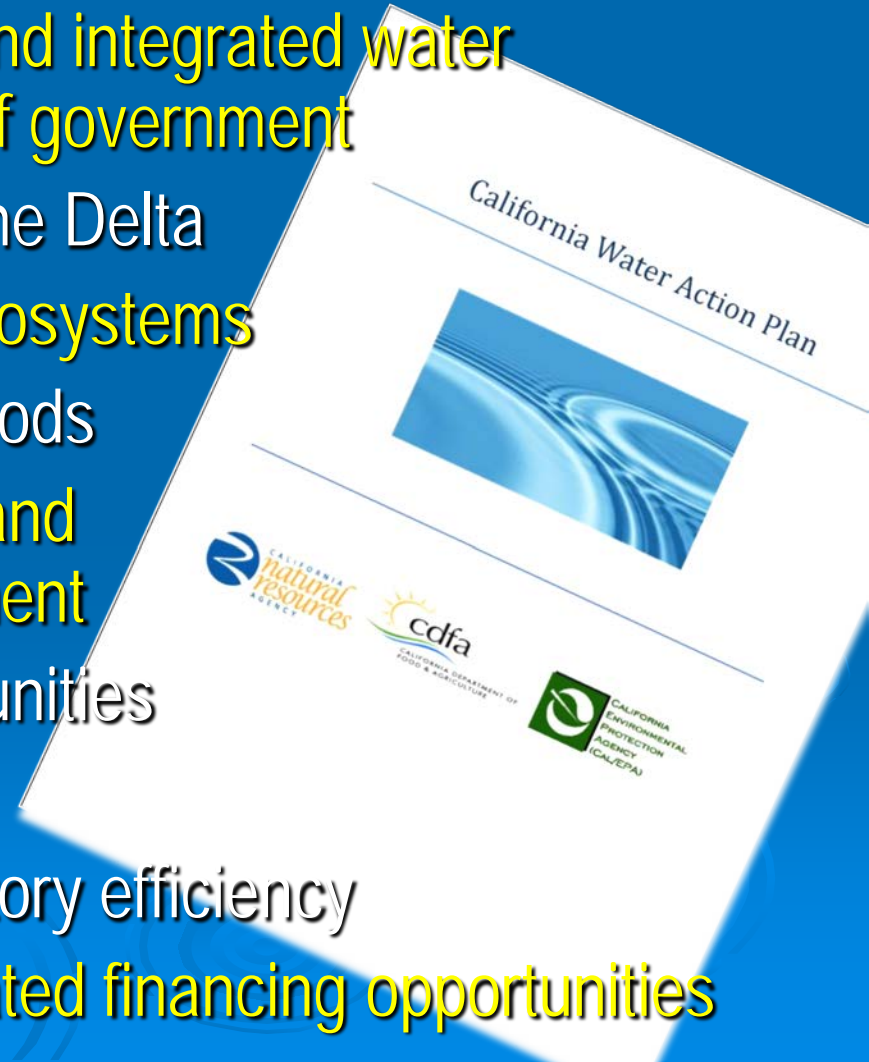
- **Reliability** --
more reliable water supplies for
our farms & communities
- **Restoration** –
restoring important
wildlife habitat & species
- **Resilience** --
more resilient, sustainably
managed water systems
& environment (supply, quality,
flood protection & ecosystems)



Governor's Water Action Plan

A Diverse Water Portfolio of 10 Priority Actions

1. Make conservation a California way of life
2. Increase regional self-reliance and integrated water management across all levels of government
3. Achieve the co-equal goals for the Delta
4. Protect and restore important ecosystems
5. Manage and prepare for dry periods
6. Expand water storage capacity and improve groundwater management
7. Provide safe water for all communities
8. Increase flood protection
9. Increase operational and regulatory efficiency
10. Identify sustainable and integrated financing opportunities

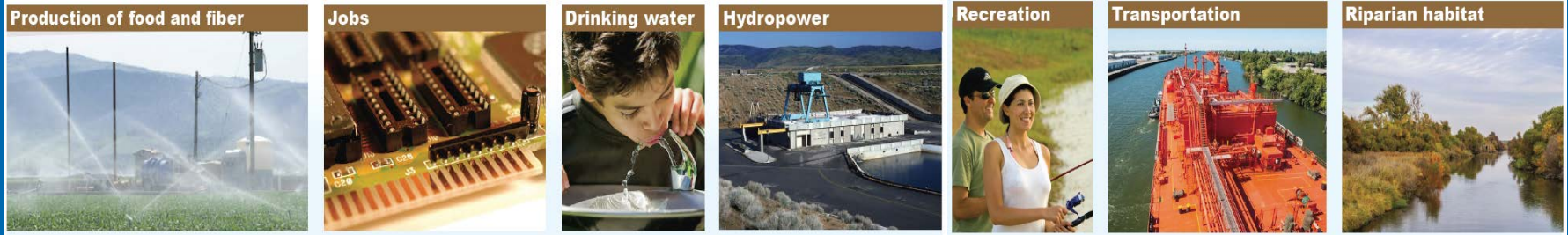


Charting a Course for IWM in California

- Water is the essence of Life
- California's complex water system is in crisis
- A diverse Portfolio Approach is needed to address challenges
- Solutions require Integration, Alignment & Investment
- We all have a role to play in securing our future



Water is the Essence of Life



PUBLIC SAFETY

ENVIRONMENTAL STEWARDSHIP

ECONOMIC STABILITY

- *Reduce flood risk Statewide.*
- *Provide safe drinking water.*
- *Improve water quality for fisheries and recreation.*
- *Clean, safe water supplies.*

- *Enhance Bay -Delta ecosystem.*
- *Restore terrestrial and aquatic habitats.*
- *Improve watershed management.*
- *Raise awareness and increase stewardship.*

- *Enhance State economic output.*
- *Contribute to job creation and security.*
- *Promote food production security.*
- *Provide stable funding for infrastructure.*



Landscaping and beautification



Aquatic habitat



Aesthetics and spiritual well being



Three Themes

California Water Plan Update 2013

Integrated Water Management

System flexibility and resiliency
Advocacy from implementers and financiers
Delivery of benefits using fewer resources

Government Agency Alignment

Clarification of state roles
Reduction in implementation time and costs
Efficient achievement of multiple objectives

Investment in Innovation and Infrastructure

Stable and strategic funding
Priority-driven funding decisions
Equitable and innovative finance strategies

Integrated Regional Water Management

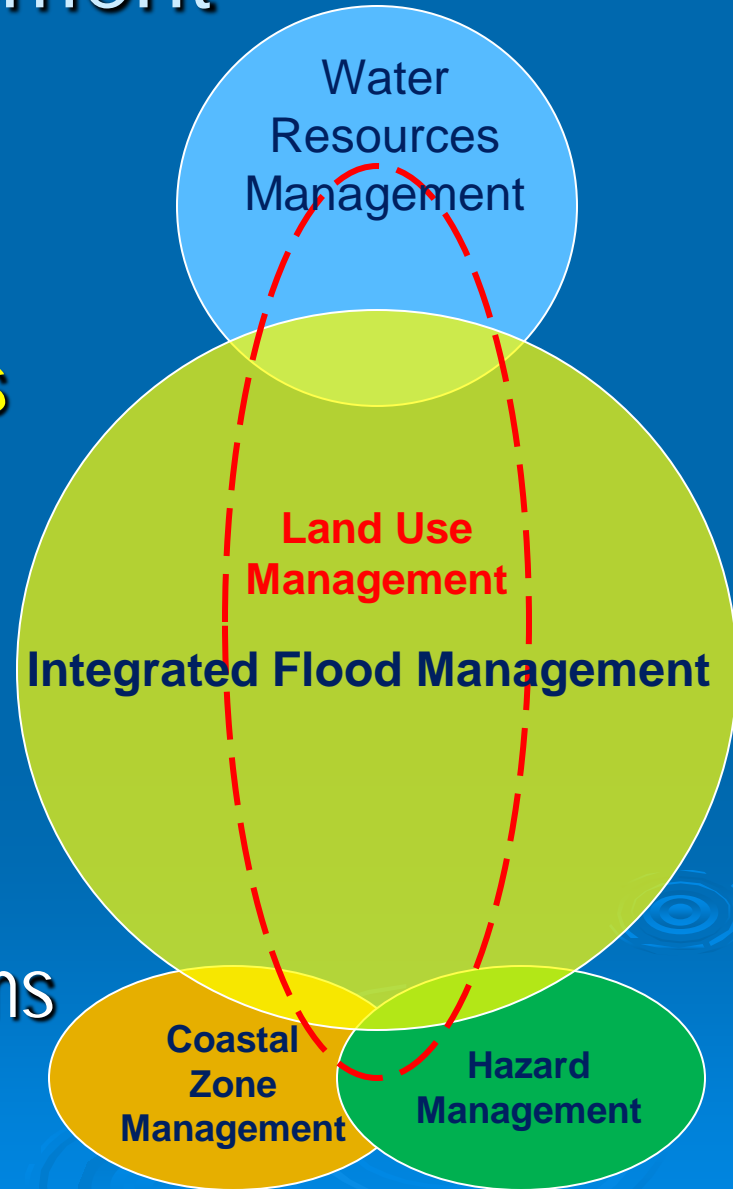
48 Regional Water Mgmt Groups

- Foster partnerships & promote regional solutions
- Diversify water portfolios & integrate supplies
- Leverage economies of scale to reduce costs
- Integrate data, tools & resources
- Invest in multi-benefit projects with sustainable outcomes
- Increase regional self-reliance



Integrated Flood Management

- Comprehensive approach to flood management
- Considers land & water resources at watershed scale
- Minimizes loss of life and property damage from flooding
- Maximizes benefits of floodplains
- Recognizes benefits to ecosystems from periodic floods



Improving Coordination Land Use Planning & Water Management



- Land use planning controlled locally
- Water management decentralized -- over 2,300 counties, cities, public agencies, and private water companies
- IRWM coordinates land use planning with water supply, quality, flood management, and climate adaptation
- State Government provides technical assistance and financial incentives
- More coordination among State agencies & with IRWM Partnerships

Strengthening Agency Alignment

- **Improve, align, and transform processes and admin. tools** for water planning, public engagement, project implementation, & policy- and regulation-setting to advance IWM.

- **Intended Outcomes**

- Consistent & regionally-appropriate plans, policies & regulations
- Shorter implementation times & avoided costs
- Achieving multiple benefits through more partnerships

- **Water Plan Strategies & Tools**

- State Agency Steering Committee (28 members)
- Companion State Plans (37 featured)
- Federal Agency Network & Companion Fed Plans
- State & Federal subject matter experts & authors
- Workshops on regulatory alignment



3 I's - Invest in Innovation & Infrastructure

California State Government in partnership with others should invest in water innovation & infrastructure to support integrated water management and sustainable outcomes

➤ Innovation actions

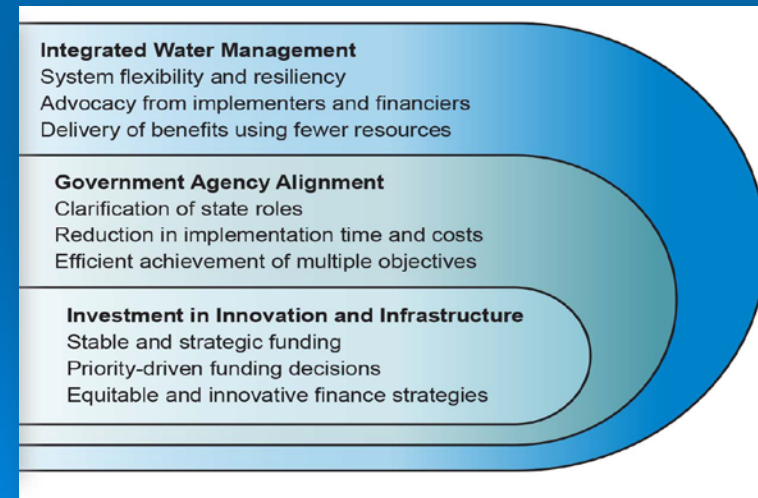
- Governance improvements
- Planning & public engagement improvements
- Agency alignment (data, plans, policies & regulations)
- Information technology (data & tools)
- Water technology & science

➤ Infrastructure improvements -- natural (green) & human (grey)

- Regional projects
- Inter-regional projects
- Statewide systems

➤ State Investments - Finance Plan

- Stable funding for innovation actions & statewide systems
- Seed money to incentivize regional infrastructure improvements¹³



Update 2013 Water Finance Planning

➤ New Finance Planning Framework

- Provides context, structure and strategies
- 8-step finance planning storyboard

➤ Shared Values for Guiding State Government Investments

- Prioritization of State government investments
- Fiduciary responsibility and accountability
- Beneficiary and stressor responsibilities

➤ Attributes of future finance strategies

- Improve cost effectiveness, efficiencies, and accountability.
- Avoid stranded costs and funding discontinuity.
- Leverage funding across State government agencies.
- Increase certainty of desired outcomes.



30 Resource Management Strategies

Tools for Diversifying Regional Water Portfolios

Reduce Water Demand

- Agricultural Water Use Efficiency
- Urban Water Use Efficiency

Improve Operational Efficiency & Transfers

- Conveyance – Delta
- Conveyance – Regional / Local
- System Reoperation
- Water Transfers

Increase Water Supply

- Conjunctive Management & Groundwater Storage
- Desalination – Brackish & Seawater
- Precipitation Enhancement
- Recycled Municipal Water
- Surface Storage – CALFED
- Surface Storage – Regional / Local

Improve Flood Management

- Flood Risk Management

Improve Water Quality

- Drinking Water Treatment & Distribution
- Groundwater / Aquifer Remediation
- Matching Quality to Use
- Pollution Prevention
- Salt & Salinity Management
- Urban Runoff Management

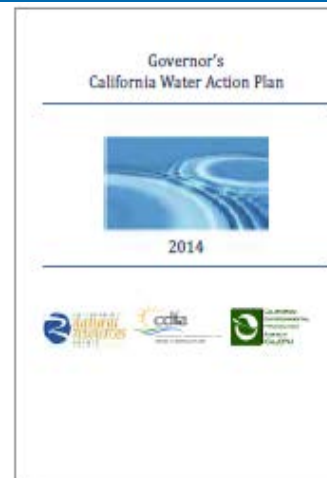
Practice Resource Stewardship

- Agricultural Lands Stewardship
- Economic Incentives
(Loans, Grants & Water Pricing)
- Ecosystem Restoration
- Forest Management
- Land Use Planning & Management
- Recharge Areas Protection
- Water-Dependent Recreation
- Watershed Management

New – Education & Outreach
Sediment Management
Water & Culture

Update 2013
informed &
helps implement
5-year Water
Action Plan

- Roadmap for Action
17 Objectives & 350+ Actions
- 30 Resource Management Strategies
- 12 Regional Reports
- Water Portfolios & Balances
- Future Scenarios & Responses
- Reference & Technical Guides



Update 2013 -- a Resource Guide for Implementing the Governor's Water Action Plan

California Water Plan Update 2013 | Highlights

A Resource for Implementing the Governor's Water Action Plan

This is a guide to assist with implementing the Governor's priority water actions in a manner aligned with the State's long-term, strategic vision for water. It links two key State government plans: the Governor's Water Action Plan and the more long-term California Water Plan Update 2013 (Update 2013). Linkages are shown between implementation actions in Update 2013 that advance one or more of the Governor's 10 priorities in the Five-Year Plan. The actions in Update 2013 represent the alignment of nearly 40 State agency plans and are well supported by the State's diverse stakeholder groups and opinion leaders.

Using this table as an entry point, implementers can access the over 350 specific actions in Update 2013. The Update 2013 actions are presented topically by the 17 objectives and related resource management strategies (RMSs) in the California Water Plan. The actions behind the objectives and RMSs can be accessed in Volume 1, Chapter 8 Roadmap for Action and Volume 3 Resource Management Strategies, respectively.

Water Action Plan's 10 Essential Actions	Make conservation a California way of life	Invest in integrated water management and increase regional self-reliance	Achieve the coequal goals for the Delta	Protect and restore important ecosystems	Manage and prepare for dry periods	Expand water storage capacity	Provide safe drinking water and secure wastewater systems to all communities	Increase flood protection	Improve operations and regulatory efficiency
------------------------------------------	--------------------------------------------	---------------------------------------------------------------------------	-----------------------------------------	------------------------------------------	------------------------------------	-------------------------------	------------------------------------------------------------------------------	---------------------------	----------------------------------------------

Update 2013 Objectives and Management Strategies

Update 2013 Objectives (Volume 1, Chapter 8)	#2 – Use and Reuse Water More Efficiently	#1 – Strengthen Integrated Regional Water Management Planning	#7 – Manage the Delta to Achieve the Coequal Goals for California	#4 – Protect and Restore Surface Water and Groundwater Quality	#2 – Use and Reuse Water More Efficiently	#3 – Expand Conjunctive Management of Multiple Supplies (includes groundwater and surface storage)	#4 – Protect and Restore Surface Water and Groundwater Quality	#6 – Improve Flood Management Using an Integrated Water	#3 – Expand Conjunctive Management
		#17 – Improve Integrated Water Management Finance Strategy and Investments		#5 – Practice Environmental Stewardship #9 – Reduce the Carbon Footprint of Water Systems and Water Uses #14 – Public access to waterways, lakes, and beaches	#3 – Expand Conjunctive Management of Multiple Supplies #7 – Manage the Delta to Achieve the Coequal Goals for California #8 – Prepare Prevention, Response, and Recovery Plans		#12 – Strengthen Tribal/State relations and natural resources management #13 – Ensure Equitable Distribution of Benefits		
Resource Management Strategies (Volume 3)	<ul style="list-style-type: none"> Ag Water Use Efficiency Urban Water Use Efficiency Recycled Municipal Water Outreach and Engagement Economic Incentives 	All 30+ RMSs can enhance regional self-reliance, depending on where they are implemented and how the benefits are allocated.	All 30+ RMSs have the potential to help meet Delta coequal goals, depending on where they are implemented and how the benefits are allocated.	<ul style="list-style-type: none"> Six RMSs pertaining to water quality Ag Lands Stewardship Ecosystem Restoration Forest Mgmt. Land Use Planning and Mgmt. Recharge Area Protection Sediment Mgmt. Watershed Mgmt. 	<ul style="list-style-type: none"> Ag Water Use Efficiency Urban Water Use Efficiency Recycled Municipal Water Conjunctive Mgmt. of Surface and Groundwater CALFED Surface Storage Local/Regional Surface Storage 	<ul style="list-style-type: none"> Conjunctive Mgmt. of Surface and Groundwater CALFED Surface Storage Local/Regional Surface Storage 	Nearly all 30+ RMSs can help provide safe water and wastewater to all communities, depending on where they are implemented and how the benefits are allocated.		

Cross-Cutting Objectives (Volume 1, Chapter 8)

- #10 – Improve Data, Analysis, and Decision-Support Tools
- #11 – Invest in Water Technology and Science
- #12 – Strengthen Tribal/State Relations and Natural Resources Management
- #13 – Ensure Equitable Distribution of Benefits
- #15 – Strengthen Alignment of Land Use Planning and Integrated Water Management
- #16 – Strengthen Alignment of Government Processes and Tools
- #17 – Improve Integrated Water Management Finance Strategy and Investments

Governor's California Water Action Plan



2014



Ways to Access Water Plan Information

- Visit the *Water Plan Web Portal*
www.waterplan.water.ca.gov

CALIFORNIA WATER PLAN eNEWS

Wednesday Update Nov. 6, 2013

This weekly electronic newsletter is designed to keep you current on California Water Plan news. We welcome comments, suggestions and any news tips that may be of interest to water planners.

Public draft of California Water Action Plan is posted and ready for comments

Public comments are being accepted for the latest draft of the [California Water Action Plan](#). The California Natural Resources Agency, California Environmental Protection Agency and the California Department of Food and Agriculture are working to identify key actions that will establish a foundation for sustainable management of the state's water resources. More information is available in this [press release](#).

President issues executive order to prepare nation for the effects of climate change

President Obama has issued an [executive order](#) directing federal agencies to prepare the country for the effects of climate change. It includes a nine-month time frame for several agencies to develop a list of changes needed to make the nation's watersheds more resilient in the face of a changing climate.

Tulare forum offers wide-ranging look at groundwater issues

A regional water forum covering a wide range of groundwater issues will be held Monday, Nov. 18, in Tulare. The [San Joaquin Valley Groundwater Overlay](#) will cover regulatory concerns, sustainability issues and other topics. The event is being organized by the American Ground Water Trust.

New agenda posted for this month's CARCD meeting and conference

An updated [agenda](#) has been posted for this year's annual meeting and conference of the [California Association of Resource Conservation Districts \(CARCD\)](#). It will be Nov. 13-16, in Napa. The conference will focus on the balance needed to meet rural and urban resource needs. Tours during the conference will cover flood management projects, sustainable wine producing practices and forest issues.

USACE module explains collaborative water resources modeling

The U.S. Army Corps of Engineers (USACE) has posted a course module explaining [collaborative water resources modeling](#). Collaborative modeling combines technical analysis with traditional planning principles to assist with complex decision processes. The module was developed as part of an online graduate course at the University of Arizona. Details are in this [USACE news release](#).

Second phase completed in development of ag land stewardship strategies

Work has been completed on the second phase in developing the [Agricultural Land Stewardship Strategies and Framework](#) (links for submitting comments are available on this site). The framework looks at a voluntary approach to incorporate agricultural land stewardship plans into planning processes using a tool box of nearly three dozen [strategies](#). More information is available in the draft [executive summary](#).



California Home Governor Home Amber Alert Tuesday, April 27, 2010

Welcome to *California*

DEPARTMENT OF WATER RESOURCES
PLANNING AND LOCAL ASSISTANCE

California Water Plan

Home > Update 2009 - Integrated Water Management

California Water Plan Update 2009
Integrated Water Management
Bulletin 160-09 Department of Water Resources

Release and Contact Information

	eNews Special Edition 1.1 MB
	Rollout Flier 0.9 MB

Secretary's Message

"The strategies outlined in these pages provide the means to manage resources comprehensively, from snowmelt to estuary, from field to tap, and all of the uses within the watershed"

[Video of former Director Stone giving his address at the Plenary meeting in](#)

- Subscribe to *Water Plan eNews*
www.waterplan.water.ca.gov/enews

Questions & Comments



Kamyar Guivetchi, PE

Statewide Integrated Water Mgmt
CA Department Water Resources

(916) 653-3937

Kamyar.Guivetchi@water.ca.gov